



**PRODUCT CATALOGUE**



# SAFETY FIRST

## *One Stop Shop for Solutions.*

Arrow Work & Safety Gear is based on a passion for delivering the highest level of service achievable to commercial organisations. Our goal is to increase the safety of businesses across Australia. By providing a one-stop shop of safety consumables, equipment, and services at competitive prices, we eliminated the need for multiple suppliers who charge full retail pricing. We want to offer our customers the best prices, with an easy shopping experience. Our store stocks a range of products to cover all your traffic equipment, crowd control safety and janitorial supply needs.

We have continued to grow and expand our local business, now working with an extensive portfolio of public and private sector clients. Today we cater to shopping centres, hotels, offices, trades, and hospitals. Our clients include Westfield, NSW Health, QIC, Stockland, Mirvac, Vicinity Centres, TAFE-NSW, Hawkesbury Hospital, and Westmead Hospital, as well as other commercial businesses. Our team is constantly expanding, and they can respond to your queries about our products and services with proactive solutions.

## OUR CLIENTS



**ACT**  
Government

**CBRE**

Charter Hall



Education



Health



**TAFE**  
NSW



# TABLE OF CONTENTS

INTRODUCTION	2
BOLLARDS	4-9
WHEEL STOPS	10-13
SPEED HUMPS	14-17
CONVEX MIRRORS	18-21
SAFETY SIGNS	22-29
SPILL KITS & PRODUCTS – CLEANING SPILLAGES	30-33
SITE SAFETY	34-39
SAFETY TAPES	40-45
WORK WEAR – WORK WEAR PRODUCTS	46-77
FITTING GUIDE	47
T-SHIRTS	48-51
T-SHIRTS/NEW ADDITIONS	52-53
SHIRTS	54-57
PANTS	58-63
SHORTS	64-65
VESTS	66-67
COVERALLS	68-69
CORPORATE WEAR	70-71
JACKETS	72-75
WELDERS RANGE	76-77
<b>PERSONAL PROTECTIVE EQUIPMENT (PPE)</b>	<b>78-93</b>
SHOES FITTING GUIDE	79
BOOTS	80-82
SOCKS	83-85
GLASSES/GLOVES	86-87
MASKS & MORE	88-91
HARD HAT	92-93
<b>FIRST AID KIT SERVICES</b>	<b>94-95</b>
TACTILES, STAIR NOSING, ENTRANCE MATS	96-101
TACTILES	98-99
STAIR NOSING AND ENTRANCE MATS	100-101
TRADE SERVICES	102-107
JANITORIAL PRODUCTS	108-113
<b>WET WEATHER GEAR</b>	<b>114-115</b>
VISIT US	116
<b>OUR SUPPLIERS AND GUIDELINES</b>	<b>117</b>

# BOLLARDS

Our Bollards are protective posts that can minimise damage in the case of vehicular collisions. Our bollards can be installed in almost any situation to increase safety and provide other benefits. We can accommodate these situations due to our range of bollards and cones, including metal bollards, flexible bollards, fold-down bollards, and t-top bollards, amongst others.

Bollards can be used to guide traffic, improve safety in construction zones, protect pedestrians at intersections and properties from vehicular damage. Our security bollards are ideal for protecting sensitive areas. Install our security bollards at building front entrances, high pedestrian traffic areas and government buildings.

To ensure our bollards are suitable for all situations, they have a diverse range of features. These features include flexibility, weather resistance, UV resistance, non-fading, easily stackable, and high impact resistance and differ between our selection of bollards.

Most of our bollards come equipped with a high-intensity reflector. Therefore, our bollards are the perfect safety and traffic management solution throughout the day.

We have ensured that we use high-quality materials. As a result, we can guarantee that our bollards will be strong and durable. They can withstand strong levels of impact to protect the surrounding area and pedestrians.







# BOLLARDS

## FLEXIBLE KNOCK DOWN TWO PIECE BOLLARD

CODE : BFK01

- 2-Piece bollard.
- Easy replacement of upper guide post only with no special equipment to install.
- High intensity reflective tape.
- Suitable for work zone safety, roadwork, traffic control, construction and mining applications.
- Used for temporary traffic control and traffic guidance.

**BEST  
SELLER**



MODEL	HEIGHT	DIAMETER	WEIGHT
BFK01	830MM	100MM	3.1KG



## T-TOP BOLLARD

CODE : BTT01

- Made from high-quality PE, flexible and weather resistant.
- UV resistant, non-fading.
- Made to Australian Standards.
- Base weight of 6kg.
- High intensity reflective tape.

MODEL	HEIGHT	DIAMETER	WEIGHT WITH BASE
BTT01	1150mm	100mm	7kg



## FLEXIBLE BOLLARD

CODE : BFL01

- Made from high-quality Poly Urethane.
- Flexible with high impact resistance.
- UV resistant.
- Non-fading.
- Fluorescent colour with high intensity reflective tape.
- Perfect for work zones and roadwork.

MODEL	HEIGHT	DIAMETER	WEIGHT
BFL01	780MM	200MM	900GM



## STACKABLE BOLLARD

CODE : BST01

- Two-piece construction for easy handling and storage.
- Heavy rubber base for high stability in high-speed traffic and wind.
- Base weight of 6kg.
- Made of flexible and tough LDPE.
- UV stabiliser, anti-ultraviolet radiation and fade.

MODEL	HEIGHT	DIAMETER	WEIGHT
BST01	1150mm	95mm Top, 220mm Bottom	25

## METAL PREMIUM BOLLARD WITH REFLECTIVE TAPE – 140MM /90MM CODE:BPR90 (90MM),BPR140 (140MM)

- Surface Finish: Galvanised and Powder-Coated.
- 50mm Red Reflective Tape.
- Must have 1.6m in between individual bollards.
- Height of approx. 1m.
- Must have a reflective panel.
- The bollards should not block the pedestrian path.

DIAMETER	HEIGHT	THICKNESS
90mm	900mm	3mm
140mm	1200mm	3mm



## STAINLESS STEEL RETRACTABLE BELT BARRIER & MATCHING BASE CODE : BSB01

- Stainless Steel Retractable Belt Bollard to organise lines and block public access to floor space.
- A woven nylon retractable belt and weighted base that helps them stay upright. With simple assembly, it is perfect for high traffic areas.
- 2.0m Belt Stainless Steel Queue Control Bollard.

DIAMETER	HEIGHT	COLOUR	WEIGHT
60mm	880mm	Silver	6kg



## TRAFFIC LANE SEPARATORS

CODE : BTR01

- Traffic Lane Separators are used to effectively separate vehicles from changing lanes or entering a restricted area.
- Suitable for both permanent or temporary applications.
- Traffic Separators are the perfect lane divider to guide traffic on roadways, exit ramps, car parks, cycle lanes, warehouses and underground passageways.

DIMENSIONS
Module: 1000(L) x 250(W) x 85(H)mm 15kg (2 Bolts)
End Caps: 500(L) x 250(W) x 85(H)mm 7.5kg (Each) (2 Bolts per Pair)



## METAL FOLD-DOWN LOCKING BOLLARD

CODE : BMF01

- Surface Finish: Galvanised & Powder-Coated.
- Base: Cast Iron.
- Bolts Hole Size: 12mm.
- Keyed Alike: 2 Keys per Bollard.

DIAMETER	HEIGHT	THICKNESS	WEIGHT
60mm	610mm	3mm	5.3kg



## METAL MITRE TOP BOLLARD 160MM

CODE : BST01

- These bollards are made with steel to protect against accidents and damage to buildings and properties.
- Should be a 1.6m allowance between bollards.
- Approximate bollard height of 1m.
- There should be enough space between the bollard and kerb to allow for pedestrians and vehicle overhangs.

COLOR	HEIGHT	OUTER DIA	INNER DIA	CAP TYPE
Yellow	1100mm	160MM	155MM	Flat

## METAL HEAVY DUTY BOLLARD - 90MM/140MM CODE : BHD90 (90MM), BHD140 (140MM)

- Metal bollards are designed with high impact resistance in order to stop a vehicle that crashes into them. Being made with steel, these bollards protect against accidents and damage to buildings and properties.

COLOR	HEIGHT	OUTER DIA	INNER DIA	CAP TYPE
Yellow	1000mm	90MM	85MM	FLAT
Yellow	1100mm	140MM	135MM	CAP



# BOLLARDS



## SURFACE MOUNTED STAINLESS STEEL FIXED BOLLARD CODE : BFB01

- Surface mounted and easily installed.
- Has a high quality surface treatment and hairline polish finish.
- Sizing dimensions can be customised.
- Reflective tape, flange plate and fixings are available options.

HEIGHT	DIAMETER
900mm or 1200mm	90mm, 114mm or 140mm



## IN-GROUND STAINLESS STEEL BOLLARD CODE : BFB02

- In-ground fixed and easily installed.
- High quality surface treatment with a hairline finish.
- Sizing can be customised upon request.
- Reflective tape, flange plate and fixings are available options.

HEIGHT	DIAMETER
900mm or 1200mm	90mm, 114mm or 114mm



## REMOVABLE BOLLARD — PADLOCK SYSTEM CODE : BRP01

- Useful for period access requirements and can be easily removed for temporary situations.
- Padlock for effective locking system.
- Hot dip galvanised and powder coated finish.
- Easily installed and maintained.
- Reflective tape for high visibility.
- Customised sizes and materials available.

HEIGHT	DIAMETER
900mm + 225mm	89mm



## FOLD-DOWN BOLLARD — INTEGRAL LOCK SYSTEM CODE : BMF02

- Integral locking system for security.
- Easily installed and maintained.
- Can be easily lifted and folded down.
- Reduces damage to vehicles and cars.
- Has a flat top and spring part.

HEIGHT	DIAMETER
600mm	60mm



## FLAT FOLD-DOWN BOLLARD CODE : BMF03

- 800mm tall when unlocked and upright.
- 80mm high when lying flat on the ground.
- Includes two keys.
- Hot dip galvanised and powder coated yellow on carbon steel.
- Includes a 50mm reflective tape for high visibility.

HEIGHT	WIDTH	LENGTH
800mm	50mm	150mm





#### TPU FLEXIBLE BOLLARD 450MM

CODE : A4947

- Manufactured from extremely durable UV stabilised Thermoplastic Polyurethane (TPU).
- Hi-visibility orange with reflective tape for extra night time & low light visibility.
- The Flexible Bollards can be fitted to concrete, bitumen or other surfaces by simply bolting to the floor with the base.
- Extremely durable and with the unique base design.
- Designed and tested to spring back into their original shape after repeated impacts with vehicles.

HEIGHT	BASE WIDTH	POST DIAMETER
450mm	200mm	100mm



#### HIGH DENSITY FLEXIPOLY BOLLARD 144MM

CODE : A3688

- Manufactured from high-density polyethylene.
- These bollards will flex when impacted.
- Suitable for high impact areas.
- Can replace the sleeve as a separate component.
- The PE Sleeve fits securely into the steel base for both flexibility and effectiveness.
- Bolt on design easy to install and ideal for permanent or temporary applications.

HEIGHT	BASE WIDTH	DIAMETER
450mm	200mm	100mm



#### HIGH DENSITY FLEXIPOLY BOLLARD 90MM

CODE : A5309

- Manufactured from high-density polyethylene.
- These bollards will flex when impacted.
- Suitable for high impact areas.
- Can replace the sleeve as a separate component.
- The PE Sleeve fits securely into the steel base for both flexibility and effectiveness.
- Bolt on design easy to install and ideal for permanent or temporary applications.

HEIGHT	COLOUR	DIAMETER
1000mm	Yellow	90mm



#### COLLAPSIBLE TRAFFIC CONE LARGE

CODE : A0120

- Includes 2 reflective stripes.
- Can be set at varying heights depending on requirements.
- Store flat for easy storage.
- Includes internal LED light that can be set at intermittent flash or constant. Batteries included.
- For added visibility, we recommend purchasing an additional LED Top Light.
- Handy carry bag also available. Not included.

HEIGHT	BASE SIZE	WEIGHT
700mm	320mm x 320mm	2kg



#### AUTOMATIC PARKING LOCK

CODE : BAP01

- 4 designs available, with different sizing dimensions.
- Comes with 3x keys, 3x expanding bolts, 2x remote controls, 4x units dry battery.
- IP 67 Waterproof so it can operate under water for more than 24 hours.
- If the parking lock is pushed by force, it automatically resets.
- 180 degree anti-collision to rotate back and forth to prevent damage upon impact.
- Optional control methods include: remote control, mobile phone control, automatic Bluetooth sensor, automatic ultrasonic sensor.



# WHEEL STOPS

To further reduce vehicular hazards, we stock Wheel Stops. The wheel stops are useful for car parks, acting as a barrier. These rubber wheel stops create a barrier between a vehicle and kerbs, walls, or footpaths. Therefore, they significantly prevent collisions between vehicles and property.

Wheel stops provide many functions by preventing vehicles from moving onto footpaths. They are one of the most effective methods to protect pedestrians and properties where vehicles drive by.

They can be installed outdoors and indoors. We recommend wheel stops in retail car parks, airports, commercial sites, and industrial sites.

Our wheel stops are made from high-quality rubber. Therefore, you are guaranteed their durability because of the superior construction of the product. We ensure that our wheel stops will not warp, crack, chip, or rot. With additional features such as UV resistance, moisture resistance, oil resistance and weather resistance, we aim to ensure our wheel stops are long-lasting.

In addition, to supply wheel stops, we also have a team of trained professionals to install them on your premises. We also stock the necessary fixings to install our wheel stops on your premise, no matter what the surface is.

**WHEEL STOP**

**CODE : WS1650**

- Superior construction and durability means these wheel stops will not warp, crack, chip or rot. Yellow Reflectors on either side of the Wheel stop – Reflective tape 3M – 6 PCS. Complies with Australian/NZ current standard AS/NZS 2890.1:2004.

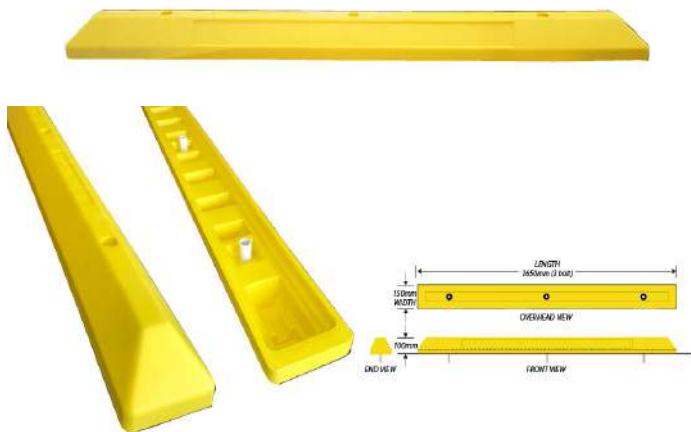


MODEL	HEIGHT	LENGTH	WIDTH	WEIGHT
WS1650	100mm	1650mm	150mm	15Kg





# WHEEL STOPS



## HI-VIS COMPLIANCE WHEEL STOP

CODE : A5213

- Fully compliant to AS/NZS 2890.1:2004 and made from environmentally friendly LLDPE.
- Designed to outperform and outlast conventional rubber wheel stops.
- We have even designed them with a clever sign recess, giving you the option to easily add a standard sign or your own custom worded message.
- High-Quality Linear Low-Density Polyethylene (LLDPE) material
- Solid colour and U.V. stabilised for harsh Australian Conditions.
- The rugged design structure includes reinforced bracing to withstand constant bumps and collisions.

HEIGHT	LENGTH	WIDTH	WEIGHT
100mm	1650mm	150mm	4.5kg



## HI-VIS COMPLIANCE WHEEL STOP SIGNS

CODE : BS4993W

- Our range of Hi-Vis Compliance Wheel Stop Signs makes parking identification easy.
- These signs fit within the moulded-in sign recess featured on the Hi-Vis Compliance Wheel Stops (A5213).
- Non-reflective signs are manufactured from Polypropylene.
- Reflective Signs are manufactured from Polypropylene Class 2 Reflective.
- Class 2 reflective signs are ideal for night or low light conditions.
- Easy to install - requires 4 screws per sign/wheel stop - We recommend the Sign Mounting Screw Sets of 4 or 40 (A5409 or A5410) to attach the Signs.

### SIGN DIMENSIONS:

HEIGHT	WIDTH
60mm	890mm



## WHEEL STOP DYNABOLT

CODE : WSDB12

- Flush head sleeve anchor M16 x 145mm Z/Y for fixing to concrete.
- For fixing PREMIUM Wheel Stops onto concrete.
- Fastening length is 135mm measured under the hexagonal nut.
- Embedded depth is 55mm into the concrete.
- 16mm in diameter.
- Yellow zinc plated for extra protection.
- Flush head fastening.

LENGTH	DIAMETER	FINISH
150mm	12mm	Galvanised





## WHEEL STOP ROAD SPIKE

CODE : WSRS12

- Road Spike M12 x 300mm for asphalt/bitumen surfaces over base course.

LENGTH	DIAMETER	FINISH
300mm	12mm	Electro Galvanised



## WHEEL STOP ROAD SPIKE SPUN GALVANISED

CODE : WSSG12

- Road Spike M12 x 300mm for asphalt/bitumen surfaces over base course.
- Secure wheel stops to concrete or asphalt with road spike spun galvanised fastenings.

LENGTH	DIAMETER	FINISH
300mm	12mm	Spun Galvanised



## WHEEL STOP SCREW BOLT

CODE : WSSB12

- Screw Bolt M12 x 150mm for fixing to concrete.

LENGTH	DIAMETER	FINISH
150mm	12mm	Galvanised





# SPEED HUMPS

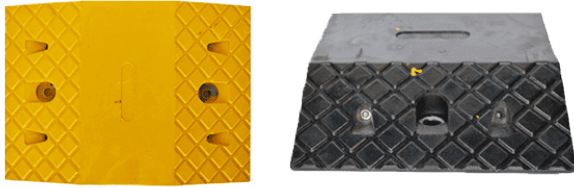
Our Speed Humps are the perfect traffic measure to reduce the chance of potential collisions. They help control traffic by lowering speed levels to 15-25 KMS per hour in heavy traffic situations or high pedestrian activity areas.

Speed humps can be installed in shopping centres, school zones, car parks and other areas where pedestrian activity is high. With our stock of rubber and plastic speed humps, we cover all vehicles. They are suitable for vehicles, forklifts, trucks, and buses travelling in private, commercial, or industrial units.

Our rubber speed humps are perfect for protecting pedestrians, vehicles and properties in residential areas and laneways. They are ideal for low traffic areas. For heavier traffic areas, we recommend our plastic speed humps. These are perfect for car parks, airports, schools, and public transport stations. Even the heaviest of trucks can pass over these plastic speed humps smoothly.

Our speed humps come in yellow and black to ensure high visibility for all drivers in any environment. As a result, these speed humps can be installed indoors or outdoors and keep drivers and pedestrians safe at all hours. The chequered plate design prevents vehicle wheels from slipping.





### RUBBER MIDDLE SPEED HUMPS

**CODE : SHRM01**

- Chequered plate design to prevent slipping. Made from Rubber, UV Stabilised. Complies with Australian/New Zealand Standard AS/NZS 2890.1:2004.
- Angle height to length ratio of 1:2.
- Located clear of intersections and roadways.

#### MID SECTION

MODEL	HEIGHT	LENGTH	WIDTH	WEIGHT
SHRM01	50mm	250mm	350mm	1.5 kg each section



### RUBBER END SECTION SPEED HUMP

**CODE : SHRE01**

- Has a chequered design to stop vehicle wheels slipping. Constructed from LLDPE rubber and UV stabilised for durability. Complies with AS/NZS 2890.1:2004.
- Yellow and black/white colour pattern.
- Should not obstruct pedestrian and wheelchair traffic.
- Should be installed away from intersections and roadways.

#### END SECTION

MODEL	HEIGHT	LENGTH	WIDTH	WEIGHT
SHRE01	50mm	180mm	350mm	2.2kg each section



### PLASTIC MIDDLE SECTION SPEED HUMPS

**CODE : SHPM01**

- Has a chequered plate design to stop vehicles from slipping. Highly durable from LLDPE plastic and UV Stabilised. AS/NZS 2890.1:2004 compliant.
- Height to length angle ratio of 1:2.
- The humps cannot block pedestrian or wheelchair traffic.
- Colour pattern of yellow and black/white sections.

#### MIDDLE SECTION

MODEL	HEIGHT	LENGTH	WIDTH	WEIGHT
SHPM01	50mm	250mm	350mm	1.35 kg each section



### PLASTIC END SECTION SPEED HUMP

**CODE : SHPE01**

- Chequered plate design to prevent slipping. Made from LLDPE Plastic, UV Stabilised. Complies with Australian/New Zealand Standard AS/NZS 2890.1:2004.
- 1:2 angle height to length ratio.
- Visible pattern of yellow and black colours.
- Installation must be away from intersections and roadways.

#### END SECTION

MODEL	HEIGHT	LENGTH	WIDTH	WEIGHT
SHPE01	50mm	250mm	350mm	0.6 kg each section

# SPEED HUMPS



## PREMIUM LARGE MODULAR SPEED HUMPS

CODE : SHPL01

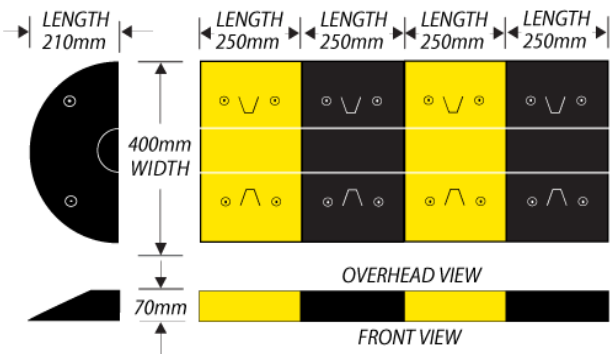
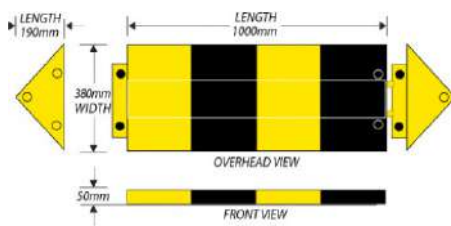
- Speed Hump is UV rated and suited for both indoor & outdoor applications.
- Yellow embedded strips to ensure maximum visibility - ensure peace of mind and longevity. (Other designs have glued on strips which deteriorate and come off over time meaning additional maintenance costs to replace stickers.)
- Up to 3 times wider than standard Type 2 speed bumps.
- Interlocking modular sections allow you to create variable length speed humps to suit your requirements.
- BODY (mm): 900W x 500L x 50H. Weight: 15kg. (6 fixings per Body)
- END CAP (mm): 900W x 200L x 50H (each). Weight: 6.0kg. (6 fixings per End Cap pair)



## SPEED HUMP HEAVY DUTY 3MM STEEL (50MM)

CODE : SHST01

- Our 3mm thick steel plate is the best solution for high traffic areas where the vehicle type is mainly cars or light industrial vehicles.
- Rated for load bearing up to 5 tonnes/axle.
- For traffic involving extra heavy vehicles, select our 5mm thick steel plate option which is rated for load-bearing up to 20 tonnes/axle.
- Complies with AS2890.1 2004
- Easy to install, strong modular 3mm steel construction.
- BODY: 1000(L) x 380(W) x 50(H)mm 18kg (need 2 Bolts per piece).
- END CAP: 190(L) x 380(W) x 50(H)mm 3.5kg/pair (need 4 Bolts per pair).



## SPEED HUMP BULLDOG™ PLASTIC COMPLIANCE

CODE : SHBP01

- Our 3mm thick steel plate is the best solution for high traffic areas where the vehicle type is mainly cars or light industrial vehicles.
- Rated for load bearing up to 5 tonnes/axle.
- For traffic involving extra heavy vehicles, select our 5mm thick steel plate option which is rated for load-bearing up to 20 tonnes/axle.
- Complies with AS2890.1 2004
- Easy to install, strong modular 3mm steel construction.
- BODY: 1000(L) x 380(W) x 50(H)mm 18kg (need 2 Bolts per piece).
- END CAP: 190(L) x 380(W) x 50(H)mm 3.5kg/pair (need 4 Bolts per pair).



## SPEED HUMP BULLDOG™ PLASTIC COMPLIANCE

CODE : SHBP01

- Fully compliant with Australian standards AS/NZS 2890.1:2004. Specially developed U.V. stabilised composite plastic construction means that they will not fade or degrade over time.
- Manufactured from environmentally friendly Linear Low Density Polyethylene (LLDPE).
- Designed to minimise noise – perfect for residential areas.
- Easy, one-person job to install.
- Suitable for extremely high traffic areas.
- Outperforms and outlasts cheaper rubber speed humps.
- Extremely economical speed hump – compare our prices.
- Slip-resistant cross-hatch surface.
- Built-in cable channel 25(W) x 30(H)mm
- Outstanding night time visibility thanks to inbuilt prismatic reflectors.
- Reinforced mounting points provide extra stability.





## SPEED HUMP FIXING KIT

CODE : SHFK16

- Speed Hump Fixing Kit, [4 x pcs] M14 x 75mm Nylon plug with M10 x 90mm screw bolt and 28mm washer.
- Suitable for both concrete and asphalt/bitumen.

LENGTH	DIAMETER	FINISH
70mm	16mm	Zinc



## SPEED HUMP ROAD SPIKE

CODE : SHRS12

- Road Spike M12 x 200mm for fixing to asphalt/bitumen surfaces over base course.

LENGTH	DIAMETER	FINISH
200mm	12mm	Electro Galvanised



## SPEED HUMP SCREW BOLT

CODE : SHSB12

- Screw Bolt M12 x 75mm for fixing to concrete.

LENGTH	DIAMETER	FINISH
75mm	12mm	Galvanised



## SPEED HUMP WEDGE ANCHOR

CODE : SHWA16

- Drop-in wedge anchor M16 x 50mm with M12 x 40mm fixed bolt and 30mm washer for fixing to concrete.

LENGTH	DIAMETER	FINISH
50mm	16mm	Zinc Yellow



# CONVEX MIRRORS

We have indoor and outdoor Convex Mirrors, which reduce the risk of blind spot hazards. Curved corners on streets or car parks can make it difficult to see oncoming traffic and beyond the entrance and exit of the car park. The mirrors are curved with a reflective surface raised towards the light. These mirrors reduce blind spots by providing a larger view of the space.

Convex mirrors are useful in work environments, shopping centres, warehouses, yards, and offices.

Our convex mirrors make images appear smaller. As the moving object gets closer to the mirror, it becomes larger. Therefore, drivers and pedestrians can see a wider view of the surrounding area. In car parks, these mirrors reduce the risk of collisions as you can see incoming traffic around bends.

Both our indoor and outdoor mirrors come with an aluminium edge. This ensures good sealing and that the lens is well secured. Our indoor mirror comes with a zinc plated wall and pole installing bracket. The outdoor convex mirror is installed with either pole or wall mounted fittings.

You can also use our indoor mirror for minimal outdoor purposes as it is anti-UV and anti-aging.



#### INDOOR - CONVEX MIRROR

CODE : CM1600

- Polycarbonate Mirror Face.
- Indoor with Internal Beading.
- Zinc-Plated Wall & Pole Installing Bracket.
- Can Be Used For Outdoor Area.
- Anti-UV, Anti-Ageing.
- Fully Assembled Ready To Install.

DIAMETER	WEIGHT	SIZE	PC
600MM	4.15KGS	2.5 inch Wall & Pole Mounting	0.07mm



#### OUTDOOR - CONVEX MIRROR

CODE : CM0600

- Suitable where a Strong Outdoor Convex Safety Mirror is required.
- Warehouse or Industrial Use - Doorways, Pallet Racks, Forklift Areas, Conveyors, Hoppers.
- Outdoor Area - Crossovers, Car Parks, Laneways, Roads, Exit/Entry Points to Buildings.

DIAMETER	WEIGHT	SIZE	PC
600MM	4.15kg	2.5 inch Wall & Pole Mounting	0.07mm



#### SAFETY MIRROR HALF DOME

CODE: CMHD300 (300MM), CMHD450 (450MM), CMHD660 (660MM), CMHD800 (800MM)

- This half dome safety mirror is perfect for busy areas and corridors, and hazardous T-Intersections (for example hospitals, labs and offices). Suitable for any application where the clearest possible view of what's coming around the corner is essential.
- Constructed from premium thick acrylic for superior performance and longevity.
- Each mirror is hand-inspected to ensure that it will not bend.

MATERIAL	SIZE
Acrylic	300MM
Acrylic	450MM
Acrylic	660MM
Acrylic	800MM



#### WALL MOUNT BRACKET TO SUIT 76MM ODI POSTS

CODE : A0760

- This wall mount bracket suits a wide range of Crystal View Convex Mirrors - Any mirror that requires a 76mm ODI, including a range of indoor and outdoor models.
- Included:
- 1 x Wall Mount Bracket suitable for 76mm ODI.

# CONVEX MIRRORS



Crystal View™  
SAFETY MIRRORS



Post mount and wall mount hardware is included.  
(Suits 60mm ODI Post)

## SAFETY MIRROR OUTDOOR CONVEX 450MM POLYCARBONATE CODE : A0026

- These Crystal View™ polycarbonate security safety mirrors are cost-effective and perfect for various outdoor applications where good performance at a reasonable price is required.
- Extremely durable and fully weatherproof outdoor mirror.
- Suitable for various pedestrian and traffic applications - car parks, low visibility intersections, roads, loading docks and retail facilities.
- High visibility orange visor with weather-proof edging.
- The visor reduces sun glare and protects the mirror from extreme weather and tree sap.
- Post mount and wall mount hardware is included.
- Suits 60mm ODI Post.



Post mount and wall mount hardware is included.  
(Suits 60mm ODI Post)

## SAFETY MIRROR INDOOR CONVEX 450MM POLYCARBONATE CODE : A0014

- This cost-effective Crystal View™ polycarbonate security/safety mirror is great for a huge range of indoor areas.
- Applications include warehouses, loading bays and retail facilities.
- High-performance product for a very reasonable price.
- Mirrors can be mounted on posts, walls and even racking.
- Post mount and wall mount hardware is included.
- Suits 60mm ODI Post.
- Note: Fixing arm single length is 180mm or fully extended 380mm.



Post mount and wall mount hardware is included.  
(Suits 76mm ODI Post)

## SAFETY MIRROR OUTDOOR CONVEX 800MM POLYCARBONATE CODE : A0033

- These Crystal View™ polycarbonate security safety mirrors are cost-effective and perfect for various outdoor applications where good performance at a reasonable price is required.
- Product is an extremely durable weather-proof mirror.
- Suitable for various pedestrian and traffic applications - car parks, low visibility intersections, roads, loading docks and retail facilities.
- High visibility orange visor with weather-proof edging.
- The visor reduces sun glare and protects the mirror from extreme weather and tree sap.
- Post mount hardware is included.
- Suits 76mm ODI Post.
- Wall mount hardware (76mm ODI) sold separately



Mounting hardware included

## SAFETY MIRROR FULL DOME 660MM ACRYLIC CODE : A1684

- Detect and discourage shoplifters, and reduce collisions in warehouses and offices.
- Constructed from premium 3mm thick acrylic for superior performance and longevity.
- Each mirror is hand-inspected to ensure that it will not bend or distort like cheaper alternatives.
- Can be suspended on chains or fixed directly to the ceiling to provide a complete 360° view.
- For best results, we recommend placing this mirror in the centre of a space.
- The first choice for hospitals and other facilities where clarity and durability are critical.
- Lightweight and easy to install.
- Mounting hardware is included.





## SAFETY MIRROR OUTDOOR CONVEX 1000MM POLYCARBONATE CODE : A3954

- Product is an extremely durable weather-proof mirror.
- Suitable for various pedestrian and traffic applications - car parks, low visibility intersections, roads, loading docks and retail facilities.
- High visibility orange visor with weather-proof edging.
- The visor reduces sun glare and protects the mirror from extreme weather and tree sap.
- Post mount and wall mount hardware is included.
- Suits 76mm ODI Post/Pole.
- Wall mount hardware (76mm ODI) sold separately



## SAFETY MIRROR RECTANGULAR 450MM(H) X 600MM(W) STAINLESS STEEL WIDE-VIEW CODE : A3955

- This wide-view rectangular security safety mirror offers a greater peripheral view as opposed to circular convex mirrors.
- With a 160° view, this Crystal View™ mirror is perfect for use when a wide field of vision is required, or in low ceiling environments.
- Shatter-proof, stainless steel face.
- Tough, all-weather, fibre-reinforced plastic backing.
- These wide-view mirrors are suitable for both indoor and outdoor use.
- Post mount hardware is included.
- Suits 76mm ODI Post.
- 76mm ODI Wall-mount bracket is available separately.



## SAFETY MIRROR OUTDOOR CONVEX 600MM STAINLESS STEEL CODE : A0023

- Perfectly suited to outdoor environments.
- Ideal for areas where vandalism or extreme weather events are likely to occur - public areas, roads, railway stations, airports and mining sites.
- This style of convex mirror is the highest performing product in the categories of warehouse safety mirrors, carpark safety mirrors and forklift safety mirrors.
- The hi-vis orange visor reduces sun glare and protects the mirror from extreme weather and tree sap.
- Post mount hardware is included.
- Suits 76mm ODI Post.
- Wall mount hardware (76mm ODI) sold separately.
- NOTE: Convex mirrors are not concave mirrors.



## SAFETY MIRROR INDOOR CONVEX 600MM STAINLESS STEEL LIGHT- WEIGHT CODE : A1752

- This Crystal View™ lightweight stainless steel security/safety mirror provides outstanding vision and durability at an amazing price point. We are certain that you will not find a comparable quality mirror at this price on the Australian market.
- Perfect for both indoor or outdoor (outdoor without visor requirement) locations.
- Applications include: eliminate blind spots or provide higher visibility to drivers, workers, pedestrians and/or forklift drivers.
- Wall and post mount hardware is included.
- Suits 76mm ODI Post.



# SAFETY SIGNS

## ROAD AND CAR PARK SAFETY

Arrow Work & Safety Gear stocks a range of safety signs for any situation. If you cannot find a suitable sign, check out our customisation options. Our customised designing services include logo design, brand identity, advertisement design and print design. Additionally, we offer a variety of sizing and material options, including reflective surfaces. To increase the longevity of your sign, our shop offers a UV and weather-proof protective laminate.

Safety Signs are critical to protecting individuals from harm. They use colour, text, shapes, and symbols to communicate information. Our signs raise awareness about current hazardous situations to prevent injuries or damage. They need to be installed as soon as a real or potential threat is identified.

We can supply our safety signs for your car parks, shopping centres, loading docks, restrooms and other areas. Therefore, our signs serve many purposes, such as marking exit routes, car park directions and the required use of PPE.

All our safety signs comply with the Australian Standard AS 1319. Therefore, you can be reassured that our signs will help keep your premise safe.

In addition to safety signs, we can have your information printed on other material such as banners, flyers, office stationery and business cards.







# SAFETY SIGNS



**ROAD SIGN STOP** CODE : SSSA01 (ALUMINIUM), SSSM01 (METAL)

- Class 1 retroreflective.
- Manufactured to meet relevant Australian Standards.
- Bold white STOP text.
- Red octagon background.

MATERIAL	SIZE
Aluminium	600mm * 600mm 750mm * 750mm
Metal	600mm * 600mm 750mm * 750mm



**ROAD SIGN ROAD HUMP**  
CODE : SSHA01 (ALUMINIUM), SSHM01 (METAL)

- Class 1 retroreflective
- Aluminium or metal options
- Manufactured to relevant Australian Standards
- Black road hump symbol
- Black border
- Diamond-shaped yellow background

MATERIAL	SIZE
Aluminium	600mm * 600mm
Metal	600mm * 600mm



**A-FRAME FLOOR STAND**

CODE : SSAF01

- Use this wet floor a-frame floor stand to warn guests and personnel of a potential hazard associated with slippery or wet floors. The A-frames portable nature is quick to deploy infrequent or emergency situations and highly visible for all to see.
- Double sided plastic A-frame sign features a caution message on both sides.
- Folds flat for efficient storage.
- Yellow colour for high visibility.
- Black icons and wording.
- Custom message available upon request.
- Also available in stainless steel.



**ROAD SIGN PEDESTRIAN CROSSING**  
CODE: SSPCA01 (ALUMINIUM), SSPCM01 (METAL)

- Class 1 retroreflective.
- Aluminium or metal options.
- Manufactured to meet relevant Australian Standards.
- Bold, black, walking, pictogram.
- Black border and yellow circle background.

MATERIAL	SIZE
Aluminium	600mm, 750mm, 900mm
Metal	600mm, 750mm, 900mm

**ROAD SIGN GIVE WAY**  
CODE : SSGWA01 (ALUMINIUM), SSGWM01 (METAL)

- Class 1 retroreflective.
- Manufactured to meet relevant Australian Standards.
- Bold black GIVE WAY text.
- Red inverted triangle.
- White background.

MATERIAL	SIZE
Aluminium	750mm, 900mm
Metal	750mm, 900mm



## SURVEILLANCE CAMERAS IN USE

- Surveillance cameras in use signs are for security purposes in order to warn thieves, criminals and vandals. They are commonly used in shops where covert cameras are not easily visible.
- Code : SSSCC01 (Corflute), SSSCM01 (Metal), SSSCS01 (Pack of 5 Stickers), SSSCP01 (Poly Sign), SSSCV01 (Vinyl Sticker).

MATERIAL	SIZE
Corflute	300*225mm, 450*300mm, 600*450mm
Metal	300*225mm, 450*300mm, 600*450mm
Pack of 5 stickers	60*80mm, 75*100mm
Poly Sign (Plastic)	300*225mm, 450*300mm, 600*450mm
Vinyl Sticker (SAV)	150*200mm, 300*225mm, 450*300mm



## LOADING ZONE SPAN ARROW

- Loading zone signs indicate short term use for vehicles that are loading and unloading goods in the course of business. It means that parking for the public is not allowed and they must not stop there at any time.
- Code: SSLAC01 (Corflute), SSLAM01 (Metal), SSLAS01 (Pack of 5 Stickers), SSLAP01 (Poly Sign), SSLAV01 (Vinyl Sticker).

MATERIAL	SIZE
Corflute	300*225mm, 450*300mm, 600*450mm
Metal	300*225mm, 450*300mm, 600*450mm
Pack of 5 stickers	60*80mm, 75*100mm
Poly Sign (Plastic)	300*225mm, 450*300mm, 600*450mm
Vinyl Sticker (SAV)	150*200mm, 300*225mm, 450*300mm



## AUTHORISED PERSONNEL ONLY

- Authorised personnel only signs indicate restricted entry where employees and visitors are not allowed to enter unless fully authorised. The area could be a private area or be a hazardous area for people not suitable to enter.
- Code: SSAPC01 (Corflute), SSAPM01 (Metal), SSAPS01 (Pack of 5 Stickers), SSAPP01 (Poly Sign), SSAPV01 (Vinyl Sticker).

MATERIAL	SIZE
Corflute	300*225mm, 450*300mm, 600*450mm
Metal	300*225mm, 450*300mm, 600*450mm
Pack of 5 stickers	60*80mm, 75*100mm
Poly Sign (Plastic)	300*225mm, 450*300mm, 600*450mm
Vinyl Sticker (SAV)	150*200mm, 300*225mm, 450*300mm



## LOADING ZONE P

- Loading zone signs indicate short term use for vehicles that are loading and unloading goods in the course of business. It means that parking for the public is not allowed and they must not stop there at any time.
- Code: SSLPC01 (Corflute), SSLPM01 (Metal), SSLPS01 (Pack of 5 Stickers), SSLPP01 (Poly Sign), SSLPV01 (Vinyl Sticker).

MATERIAL	SIZE
Corflute	300*225mm, 450*300mm, 600*450mm
Metal	300*225mm, 450*300mm, 600*450mm
Pack of 5 stickers	60*80mm, 75*100mm
Poly Sign (Plastic)	300*225mm, 450*300mm, 600*450mm
Vinyl Sticker (SAV)	150*200mm, 300*225mm, 450*300mm

## APPROPRIATE PPE BEYOND THIS POINT (V2)

- The appropriate personal protective equipment signs indicate that the suitable protective equipment must be worn in the area indicated. This ensures maximum safety for individuals in construction sites and meets WHS conditions.
- SSPPEC01 (Corflute), SSPPEM01 (Metal), SSPPES01 (Pack of 5 Stickers), SSPPEP01 (Poly Sign), SSPPEV01 (Vinyl Sticker).

MATERIAL	SIZE
Corflute	300*225mm, 450*300mm, 600*450mm
Metal	300*225mm, 450*300mm, 600*450mm
Pack of 5 stickers	60*80mm, 75*100mm
Poly Sign (Plastic)	300*225mm, 450*300mm, 600*450mm
Vinyl Sticker (SAV)	150*200mm, 300*225mm, 450*300mm

# SAFETY SIGNS



## FORKLIFTS IN USE

- Signs that indicate that forklifts are in use are to warn pedestrians to look out for forklift traffic. It ensures safety for the surrounding area and makes sure that pedestrians are safe around the construction sites.
- Code: SSFLC01 (Corflute), SSFLM01 (Metal), SSFLS01 (Pack of 5 Stickers), SSFLP01 (PolySign), SSFLV01 (Vinyl Sticker).

MATERIAL	SIZE
Corflute	300*225mm, 450*300mm, 600*450mm
Metal	300*225mm, 450*300mm, 600*450mm
Pack of 5 stickers	60*80mm, 75*100mm
Poly Sign (Plastic)	300*225mm, 450*300mm, 600*450mm
Vinyl Sticker (SAV)	150*200mm, 300*225mm, 450*300mm



## NO STOPPING RIGHT ARROW, LEFT ARROW, SPAN/DOUBLE ARROW

- No stopping signs indicate that drivers are not allowed to stop their vehicles at any point on the road or kerb in the direction of the arrow. They are only allowed to stop in the case of a medical or other emergency.
- Code: SSNSC01 (Corflute), SSNSM01 (Metal), P01 (Poly Sign), SSNSV01 (Vinyl Sticker).

MATERIAL	SIZE
Corflute	300*225mm, 450*300mm, 600*450mm
Metal	300*225mm, 450*300mm, 600*450mm
Poly Sign (Plastic)	300*225mm, 450*300mm, 600*450mm
Vinyl Sticker (SAV)	150*200mm, 300*225mm, 450*300mm



## FIRST AID

- A first aid sign indicates that emergency assistance is close by. As the plus sign is a universal symbol for first aid, individuals are easily able to recognise and understand the sign in the event of a medical emergency.
- Code: SSFAC01 (Corflute), SSFAM01 (Metal), SSFAS01 (Pack of 5 Stickers), SSFAP01 (PolySign), SSFAV01 (Vinyl Sticker).

MATERIAL	SIZE
Corflute	300*225mm, 450*300mm, 600*450mm
Metal	300*225mm, 450*300mm, 600*450mm
Pack of 5 stickers	60*80mm, 75*100mm
Poly Sign (Plastic)	300*225mm, 450*300mm, 600*450mm
Vinyl Sticker (SAV)	150*200mm, 300*225mm, 450*300mm



## SOCIAL DISTANCING FLOOR DECALS – BLUE/YELLOW

- Size 300 x 300mm Diameter Round.
- Indoor floor graphic displays.
- All smooth hard floors e.g. concrete and tiling.
- Low pile carpet tiles.
- Our Social Distancing Floor Decals displays to necessary distance between individuals. This floor decal has a bright blue background. Therefore, it is visible against all flooring.
- The decal is perfect for hard floors and short-pile carpet tiles in factories, shopping malls, centres, airports.
- Code : SSFDB01 (Blue) , SSFDY01 (Yellow) .

## TRAFFIC SIGN – DISABLED PARKING

- A traffic sign is used to communicate information to help employees and visitors navigate about on your site. This disabled parking sign features the text disabled parking in large bold white letters on a blue background.
- There is no Australian Standard for parking and traffic signs, however they are included due to their general nature and mass application.

MATERIAL	SIZE
Metal	300mm x 450mm 450mm x 600mm
Poly	300mm x 450mm 450mm x 600mm





## FIRE SMOKE DOOR DO NOT OBSTRUCT DO NOT KEEP OPEN

- Fire smoke door signs are used to inform individuals of the location of fire alarms and fire-fighting facilities. Therefore, the 'do not obstruct' and 'do not keep' open information allows people to keep the area empty in case there is a fire that needs to be taken care of.
- Code: SSFSC01 (Corflute), SSFSM01 (Metal), SSFSP01 (Poly Sign), SSFSV01 (Vinyl Sticker).

MATERIAL	SIZE
Metal Sign	300*150mm
Poly Sign (Plastic)	300*150mm
Vinyl Sticker (SAV)	300*150mm
Stainless Steel	300*150mm



## NO SMOKING SIGNS WITH HEALTH ACT 2000

- Help meet new No Smoking Legislations by displaying a clear message.
- Comply with the new '4 metre law'.
- Enforce your workplace's no smoking policy.
- Code: SSNSM01 (Metal), SSNSP01 (Polypropylene), SSNSA01 (Self Adhesive Vinyl), SSNSS01 (Stainless Steel).

MATERIAL	SIZE
Metal	H300*W225mm
Polypropylene (Poly)	H300*W225mm, H450*W300mm, H600*W450mm
Self Adhesive Vinyl (SAV)	150*200mm, 300*225mm, 450*300mm
Stainless Steel	150*200mm, 300*225mm, 450*300mm



## NO PEDESTRIAN ACCESS

- A 'no pedestrian access' sign informs pedestrians that they are not allowed to enter a specific area. The area may be private property or a hazardous area for the public to enter, therefore ensuring safety for pedestrians.
- Code: SSNPC01 (Corflute), SSNPM01 (Metal), SSNPS01 (Pack of 5 Stickers), SSNPP01 (PolySign), SSNPV01 (Vinyl Sticker).

MATERIAL	SIZE
Corflute	300*225mm, 450*300mm, 600*450mm
Metal	300*225mm, 450*300mm, 600*450mm
Pack of 5 stickers	60*80mm, 75*100mm
Poly Sign (Plastic)	300*225mm, 450*300mm, 600*450mm
Vinyl Sticker (SAV)	150*200mm, 300*225mm, 450*300mm



## TOW AWAY ZONE P

- An area where there is a 'tow away zone' sign indicates that vehicles are not allowed to park in that area otherwise it will be towed. It ensures that no drivers of the public park in these areas as they are kept empty for other purposes.
- Code: SSTPC01 (Corflute), SSTPM01 (Metal), SSTPP01 (Poly Sign), SSTPV01 (Vinyl Sticker).

MATERIAL	SIZE
Corflute	300*225mm, 450*300mm, 600*450mm
Metal	300*225mm, 450*300mm, 600*450mm
Poly Sign (Plastic)	300*225mm, 450*300mm, 600*450mm
Vinyl Sticker (SAV)	150*200mm, 300*225mm, 450*300mm

## SLIPPERY SURFACE

- A 'slippery surface' sign is placed in location to indicate warning of a hazardous condition for individuals walking on the ground. It is typically used in shopping centres when a floor has recently been mopped or there has been a spillage.
- Code: SSSSC01 (Corflute), SSSSM01 (Metal), SSSSS01 (Pack of 5 Stickers), SSSSP01 (Poly Sign), SSSSV01 (Vinyl Sticker).

MATERIAL	SIZE
Corflute	300*225mm, 450*300mm, 600*450mm
Metal	300*225mm, 450*300mm, 600*450mm
Pack of 5 stickers	60*80mm, 75*100mm
Poly Sign (Plastic)	300*225mm, 450*300mm, 600*450mm
Vinyl Sticker (SAV)	150*200mm, 300*225mm, 450*300mm

# SAFETY SIGNS



## DANGER SIGN – CUSTOM

CODE: SSDC01 (CORFLUTE), SSDM01 (METAL), SSDS01 (PACK OF 5 STICKERS), SSDP01 (POLY SIGN), SSDV01 (VINYL STICKER)

- This DANGER SIGN – CUSTOM sign is available in a variety of sizes and materials.
- To create your custom Danger Sign, simply enter the text you require in the text box above, along with any other details you would like to include.

MATERIAL	SIZE
Corflute Sign	300mm * 225mm 450mm * 300mm 600mm * 400mm
Metal Sign	300mm * 225mm 450mm * 300mm 600mm * 400mm
Pack Of 5 Stickers	60mm * 80mm 75mm * 100mm
Poly Sign (Plastic)	300mm * 225mm 450mm * 300mm 600mm * 400mm
Vinyl Sticker (SAV)	150mm * 200mm 300mm * 225mm 450mm * 300mm



## SPEED LIMIT 10 SIGN

CODE: SSSL01

- Help keep traffic under control. Traffic and Vehicle Signs come in a variety of materials and sizes to withstand your particular environmental and mounting needs. The parking lot or roads around your facility, property, marina or campus need signs. You'll find all of the Traffic & Vehicle Signs you need right here.

TRAFFIC SIGN MATERIAL	SIZE
Aluminium Class 1 Reflective Aluminium Class 2 Reflective Colorbond Steel Polypropylene	300mm x 225mm 600mm x 450mm



## TOILET SIGNS – BRAILLE

CODE: SSTBS01 (STAINLESS STEEL)

- These toilet signs are made from marine stainless steel. They are coated in a micro metallic silver acrylic lacquer. The tactile letters have a 30% luminance contrast. As a result, they stand out against the background. These braille signs comply with the Building Code of Australia, Design for Access and Mobility & Public Information Symbol Signs. Therefore, these signs are guaranteed to meet your standards.
- Toilet signs with braille information for the vision impaired.
- Marine Stainless Steel.
- 210x180mm.

MATERIAL	TYPE
Stainless Steel	Male Female Unisex/Disabled/Parent Room



## WET WEATHER CORFLUTE SIGN

CODE: SSWC01

- Our triangular wet weather corflute sign helps keep your customers safe during wet weather. They can be used with our other range of products or on their own to draw attention to potential hazards created by rainfall and other liquid spills.
- Our wet weather corflute signs are the perfect option to warn pedestrians and customers of potential hazards. They will keep your customers safe by diverting them from slippery floors. With its triangle shape, the three sides make sure that customers from all directions can read the warning.
- These hi-visibility triangular signs hide those unsightly yet essential white drip buckets.
- 800MM Height, 3 Sides and 5MM corflute.
- Lightweight and can be custom made.



## BOLLARD SAFETY SIGNS

CODE : SSBC01

- RE-USABLE PRODUCT, STORE UNTIL REQUIRED AGAIN When Customer Safety is Paramount in High Traffic Areas.
- Ideal for shopping centre and building entrances.
- Slips over all current safety bollards.
- Highly visible from a distance.
- 1000mm height covers full Bollard.
- Three sided by 300mm wide.
- Weather resistant and easily washed down.
- Easily removed for storage if required.
- Made from heavy duty 5mm yellow substrate.
- Supplied flat, ready-scored and taped, for easy assembly.

COMPOUND	SIZES
3mm Coreflute	1000mm x 300mm





# SPILL KITS AND PRODUCTS

## Cleaning Spillages

To reduce the hazard created by a liquid spill, we have our Spill Kits. Our store has both general-purpose and oil fuel spill kits. Therefore, we guarantee to have the right equipment to clean up any liquid spill efficiently. Our spill kit options both come in different sizes, to suit your preference.

Our General Purpose Spill Kit is used for non-aggressive liquids such as coolant, oil, solvent, paint, mild acids, and degreaser. These are colour-coded with blue containers and grey absorbents.

Our Oil & Fuel Spill Kit is perfect for oil and fuel spills in workshops, warehouses, loading docks, factories, and other indoor work sites. These spill kits are colour-coded with a yellow container and white melt-blown polypropylene absorbents. These spill kits include hydrophobic absorbents. Therefore, they can be used in areas near ponds, drains, lakes, or rivers.

Arrow Work & Safety Gear also stock individual spill kit items. Our absorbent mini booms and pads are perfect for industrial and maintenance sites, factories, shops, and transport facilities. The floor sweep makes clean-ups faster as it solidifies the liquid, which can then be swept away. These individual items can be removed or added to the kits, making them highly customisable.





# SPILL KITS



## OIL & FUEL INDOOR ECONOMY SPILL KIT CODE : SKOF120 (120L), SKOF240 (240L)

- Oil and fuel spill kits contain various melt-blown polypropylene absorbents that are colour-coded white for easy identification. These absorbents are able to absorb up to 20 times their own weight in oil and have a fast-wicking action to clean up spills quickly.
- Oil and fuel absorbents are hydrophobic, which means they repel water.

DESCRIPTION	CAPACITY
Oil & Fuel Indoor Economy Spill Kit – 120L	120 Litres
Oil & Fuel Indoor Economy Spill Kit – 240L	240 Litres



## OIL & FUEL ABSORBENT MINI BOOM 1.2M X 7.5CM CODE: SKOB120

- Our smallest oil absorbent boom has been developed to absorb oil, fuel, diesel, petrol and other hydrocarbons whilst repelling water at the same time.
- Fast absorption for improved safety and productivity in the workplace.
- Simple and easy to use without the need for specialised PPE.

DESCRIPTION	DIMENSIONS	CAPACITY
Oil & Fuel Absorbent Mini Boom	120 x 7.5 cm	7 litres



## GENERAL PURPOSE SPILL KIT CODE : SKGP120 (120L), SKGP240 (240L)

- Use this standard spill kit to absorb everyday spills of coolant, solvent, oil, degreaser, paint, blood, mild acids – all liquids. This general-purpose spill kit is ideal for areas where non-aggressive liquids are stored, handled, or may be spilled.
- Keep this standard spill kit close to areas that store day-to-day liquids.

DESCRIPTION	CAPACITY
General Purpose Spill Kit – 120L	120 litres
General Purpose Spill Kit – 240L	240 litres



## HYDROCARBON ABSORBENT MINI BOOM 3.0M X 7.5CM CODE : SKHB300

- Hydrocarbon absorbent booms absorb oil, fuel, diesel, petrol and other hydrocarbons whilst repelling water. These 3m x 7.5cm booms are used to contain, divert and absorb spills.
- Fast absorption for improved safety and productivity in the workplace.
- Simple and easy to use without the need for specialised PPE.

DESCRIPTION	DIMENSIONS	CAPACITY
Oil & Fuel Absorbent Mini Boom	300 x 7.5 cm	18 litres

## BUDGETSORB GENERAL PURPOSE ABSORBENT FLOORSWEEP – 20L CODE : SKBF20

- BudgetSorb is an absorbent floorsweep which absorbs oils, fuels, coolants, degreaser, mild acids and caustics, paints, solvents and most mild water-based chemicals.
- BudgetSorb is ideal to use on hard surfaces wherever coolant, paint, oils, fuels, mild chemicals and general liquids are stored, handled and spilled.
- Its high absorbency to weight ratio equals lower transport.

WEIGHT	DIMENSIONS	CAPACITY	SIZE
3.6 kg	29 x 12 x 35 cm	11 litres	20 litres





## GENERAL PURPOSE ABSORBENT PADS – STANDARD DUTY

**CODE : SKAP50 (50 PCS), SKAP100 (100 PCS)**

- Absorbent capacity will vary depending on liquid viscosity, specific gravity and temperature.
- Maintenance polypropylene is compatible with and absorbs most acids and bases.
- The suitability with a specific chemical should be confirmed by referencing the MSDS, a compatibility chart or sample testing. We can provide samples as required.

DESCRIPTION	PACK SIZE	CAPACITY
General purpose absorbent pads standard duty 45cm x 45cm	50 pads	57 litres
General purpose absorbent pads standard duty 45cm x 45cm	100 pads	113 litres



## DRUM BUND LOW PROFILE POLYETHYLENE WITH REMOVABLE GRATE – FOUR DRUM

- Low profile spill containment pallets are an economical solution for storing smaller drums.
- This drum bund features removable grates to easily reclaim and clean up spilled liquid.
- The removable grate also allows easy access to remove small animals and snakes that may enter the bund.
- Keeps personnel safe from accidental slips.
- Ensure spilled liquids do not contaminate factory floors, inventory or stormwater drains.

WEIGHT	SIZE	CAPACITY
29 kg	121 x 121 x 15 cm	145 litres



## GENERAL PURPOSE ABSORBENT MINI BOOM

**CODE : SKGPB8 (8L), SKGP16 (16L)**

- Absorbent capacity will vary depending on liquid viscosity, specific gravity and temperature.
- Maintenance polypropylene is compatible with, and absorbs most acids and bases.
- The suitability with a specific chemical should be confirmed by referencing the MSDS, a compatibility chart or sample testing. We can provide samples as required.

DESCRIPTION	SIZE	CAPACITY
General purpose absorbent mini boom	1.2m x 7.5cm	8 litres
General purpose absorbent mini boom	2.4m x 7.5cm	16 litres



## DRUM BUND POLYETHYLENE WITH REMOVABLE GRATE – FOUR DRUM

- A removable poly grated floor to provide easy access to the bund sump for cleaning.
- Four drum containment bunds are manufactured and tested in Australia with a 2800kg UDL.
- The extra-tough chemical-resistant polyethylene bund and polypropylene grate has been independently tested to withstand the harsh Australian environment.
- This poly spill pallet includes forklift tyne pockets for easy transportation.
- Internal sump capacity to collect drips, leaks and spills : 242 litres.

WEIGHT	SIZE	CAPACITY
31 kg	123 x 123 x 28 cm	242 litres

## DRUM BUND POLYETHYLENE – FOUR DRUM

- The solid top drum bund allows pumps, compressors etc to be fixed onto the deck of the bund.
- Chemical resistant polyethylene construction stands up to the harshest environments and chemicals.
- Solid top drum bund is accessible on both sides with a forklift, even when loaded with four 205L drums.
- Drums can be left on their wooden pallet for convenience.
- Large flat deck allows smaller containers to be stored on the unit (16 x 20L drums on the deck).
- Drum bund has three drain plugs in the sump for easy decanting of spilt liquid.

WEIGHT	SIZE	CAPACITY
35 kg	125 x 125 x 25 cm	2450 litres



# SITE SAFETY

Arrow Work & Safety Gear wanted to ensure we had everything we needed to keep our clients safe.

We have several additional car park and road safety products, including height bars, kerb ramps, tactiles, traffic delineators, corner protectors, rumble bars and dock bumpers. These products can assist in reducing accidents and property damage. They serve various purposes, including directing traffic, preventing vehicular accidents, guiding pedestrians, and controlling traffic. Our products are all available in high visibility colours to ensure all drivers and pedestrians can view them.

To assist with construction work and temporarily cordon off areas, we stock barricade tape and retractable cone bars. These products are perfect for temporary boundaries as they can be removed and reallocated easily.

We expanded our product line, given the past year, to respond to social distancing requirements. We have a range of social distancing floor decals and tape to reinforce the social distancing measurements.

Our team understands that potential hazards can arise indoors. Therefore, we carry safety and protective products that improve office and indoor area safety. Our fire sprinkler paint covers and commercial fire sprinkler tool ensures your fire sprinkler works effectively and is not damaged. While our cable protector minimises trip hazards indoors.



#### ALUMINIUM EXPANDING BARRIER

CODE : MSEB01

- Manufactured using quality lightweight aluminium for stronger durability.
- The new and improved Aluminium Expanding Barrier expands up to 4 meters.
- Includes additional feet for extra stability.
- Designed for compact easy storage and handling.
- Extremely easy to set up and simple to use.
- Expands up to 4 meters.
- Lightweight at only 6.5kg.

COLOUR	HEIGHT	LENGTH	WIDTH	WEIGHT
RED/WHITE	910mm	300mm	540mm	6.5kg



#### PLASTIC CHAIN

CODE : MSPC01

- Use this plastic chain to section off areas or warn off hazards ahead.
- Can be used in conjunction with Guideline Posts or our 4 Sided Safety Cones to expertly cordon-off areas.
- UV stabilised and highly durable.
- Can be used for both indoor and outdoor applications.
- Available in three great colour options.
- **Chain Length:**
- Yellow: 30 metres.
- Red/White: 25 metres.
- Yellow/Black: 25 metres.



#### TRI-PANEL SAFETY BARRIER HI-VIS YELLOW SAFETY FIRST

CODE : MSSB01

- Lightweight and non-conductive, perfect for electrical work and maintenance.
- Folds away quickly and easily. Link two panels together to make a longer barrier.
- Ask about custom messages, get your company logo printed.

COLOUR	LENGTH	HEIGHT	WEIGHT
Hi-Vis Yellow	Folded 570mm Expanded 1710mm	970mm	4.2kg



#### RUBBER CABLE PROTECTOR (3 CHANNEL)

CODE : MSRC01

- Non-conductive rubber construction will provide a safe passage for pedestrians and vehicles.
- Simple hinged lid operation - top opens to expose large channels.
- Easily suits a variety of cable and hose sizes, simply lay and position in place.
- Multiple units can be connected for required length.
- Recommended for temporary outdoor applications, light-duty vehicle or pedestrian traffic.
- Dimensions: Length 900mm x Width 430mm x Height 55mm.
- Weight: 10.2kg.
- Number of Channels: 3.
- Channel Size: 60(W) x 40(H)mm.



#### SIGN POST KIT

CODE : MSSP01

- This convenient Sign Post Kit is all you need to get your safety signs up and visible.
- **Sign Post Kit contains:**
- 1x 60mm ODI x 3.2m Galvanised Pole (end cap included).
- 2 x Double Sided Brackets (bolts included).
- 1 x Surface Mount Base Plate.



# SITE SAFETY



## KERB RAMPS BLACK AND YELLOW

CODE : MSKR01

- Plastic ramp designed to allow access to areas over a concrete kerb such as; hard to reach driveways.
- Slope of no more than 1:8.
- Resistant surface.
- Maximum rise of 190mm.

LENGTH	WIDTH	HEIGHT	WEIGHT
500mm	300mm	105mm	2kgs each



## DOCK BUMPER

CODE : MSDB01

- Dock bumpers are designed to prevent impact damage to loading dock walls and can be installed both indoors and outdoors. By being installed on the dock wall, it absorbs the impact of a truck or other vehicle hitting the wall. It allows the vehicle to safely reverse into the parking spot without causing damage to the property or vehicle.

WEIGHT	DIMENSIONS
22 kg	600 × 100 × 310 mm



## TRAFFIC DELINEATOR YELLOW/BLACK

CODE : MSTDO1

- Made from High Quality PE.
- Reflective Yellow Colour for High Visibility.
- Dimensions: 27cm x 0.5cm x 114cm.
- Height with Base: 118cm.
- Weather Resistant, UV Resistant & Non-Fading.
- Made to Australian Standards.
- Base Weight of 6kg.
- Base Dimensions: 33cm x 43cm x 8cm.

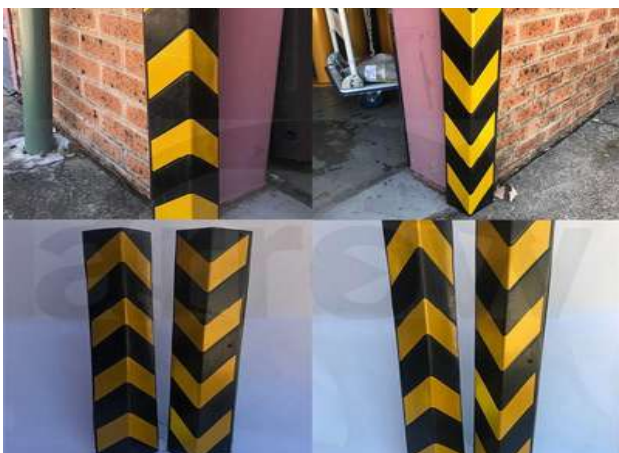


## RUMBLE BAR

CODE : MSRB01

- Rumble Bars are surface mounted units that provide a visual warning to alert motorists of hazardous conditions ahead. They are designed and built to control traffic and increase the safety of the surrounding areas. As a speed moderator, they are manufactured to be very durable. They come in safety yellow, so that they are highly visible.

LENGTH	WIDTH	HEIGHT	THICKNESS	WEIGHT
300mm	170mm	50mm	40mm	2.4kg each



## CORNER PROTECTORS

CODE : MSCP01

- Corner protectors are designed to protect the edges of columns in structures. Being made of high impact resistance tough rubber and PVC and the black and yellow reflective stripes, these corner protectors are highly visible and durable, reducing the risk of accidents and potential damage.
- The heavy-duty material absorbs and deflects high impact, which protects vehicles from paint damage and dents. As well as protecting vehicles from damage in tight car spaces, corner protectors can also be used on machinery to cover sharp corners.

WIDTH	HEIGHT	THICKNESS	WEIGHT	MATERIAL
100mm	800mm	16mm	4kg	Heavy Duty Rubber



## FENCING MESH 5.5KG

CODE : A0367

- Fencing mesh is made from tough, extruded polypropylene making it ideal for construction sites and road work where you need more security than simple barricade tape. Highly visible and UV stabilised for the harsh Australian sun.



## BARRIER BOARD (CENTRE LANE) BLACK/YELLOW CLASS 1W REFLECTIVE CODE : A0437

- Reflective Barrier Boards are designed to provide protection around your site in traffic areas. These Barrier Boards are the preferred choice of Traffic Controllers, Civil & Construction and are also specified by State Road Authorities across Australia.
- Manufactured using specially formulated ABS plastic.
- Incredibly durable and long-lasting, they exceed other options on the market.
- Equipped with Class 1W reflective material.
- Manufactured from durable ABS plastic with Class 1W reflective material.
- Boards measure 2500mm long x 190mm wide.
- Heavy Duty Steel A-Frame Legs are sold separately.
- Add a vinyl pre-filled bag for extra stability.

COLOUR	BARRIER LENGTH	BARRIER WIDTH
Yellow/Black	2500mm	190mm



## LIGHTWEIGHT ZENEX SAFETY LOCKOUT PADLOCKS

CODE : A0992

- Dedicated safety padlock designed exclusively to be used in lockout/tagout applications.
- Tough, lightweight, dielectric Zenex body withstands chemicals and performs effectively in extreme conditions.
- 6mm plated metal shackle for corrosion resistance.
- Choice of 8 colours for easy lockout identification.
- Key-retaining ensures padlocks are not left unlocked.
- Includes write-on "Danger" and "Property of" labels in French, English and Spanish.
- Laser engrave on up to 4 sides.



## OUT OF SERVICE TAGS

CODE : BS8018P25

- An economic way to meet safety and maintenance requirements in your facility.
- Cardboard tags are 75 x 160mm with a hole ready for easy application.
- Supplied in packs of 25, easy to write on with pen or pencil.

MATERIAL	TAG SIZE	TAG PACK QUANTITY
Cardboard	75mm x 160mm	Pack of 25

# SITE SAFETY



## VEHICLE HEIGHT BAR (5 METRES AND 3 METERS LONG)

**CODE : MSHB01**

- Reflective diagonal stripes, powder-coated steel.
- Wording: 'Low Clearance' with your specified height. When ordering please advise height you require.
- Bar dimensions: 5000mm x 100mm 50mm.
- Weight: 22.3kg.
- **Ceiling Mount Assembly (A4432) Includes:**
  - 2 x Height bar brackets.
  - 2 x 320mm metal mounting chains.
  - 2 x D shackle bolts.
- NOTE: Mounting fixture attached to ceiling not included.
- **Wall Mount Assembly (A4433) Includes:**
  - 2 x Wall mounting arms.
  - 4 x Height bar brackets.
  - 2 x 320mm metal mounting chains.



## CONE BAR – RETRACTABLE

**CODE : MSCR01**

- Our retractable cone bars are designed to join our traffic cones and T-top and stackable bollards as a temporary barrier for construction zones and hazardous areas. It is the most efficient and effective physical barrier to block off areas and make the surrounding areas safer instantly. Our retractable cone bars come in black and yellow stripes, making them highly visible so that pedestrians can see the hazardous areas.
- Black and yellow striped pattern, therefore highly visible.
- Must not be used as a substitute for barrier boards and signs at either end of the work.
- Should only be used while work is in progress and employees are in attendance.



## FERNO ROOF WORKERS KITS

**CODE : MSRW01**

- The FERNO Roof Workers Kit comes complete with full body harness, 15m rope with adjuster with integral lanyard and a tie-off adaptor. This roofers kit is a versatile working height safety kit which is suitable for workers in many general roof and construction applications.
- Supplied complete in backpack or duffel bag.
- Comes in a variety of rope lengths (available on request).
- Supplied with screw gate connectors for harness and lanyards.
- Rated for 1 person fall arrest.
- Complies with AS/NZS 1891.4.



## FERNO MOBILE PRIVACY SCREEN

**CODE : MSMP01**

- The Ferno Mobile Privacy Screen is a full height, lightweight, stable and secure screen.
- Each panel is made with lightweight vinyl that is heat sealed and easy to clean. The rigid frame is constructed from anodised aluminium for easy manoeuvrability, and the legs and castors are removable, so the unit can be packed flat for storage or freight.

WIDTH	HEIGHT
Folded : 66cm Extended: 192cm	0





## COMMERCIAL FIRE SPRINKLER TOOL

**CODE : MSFT01**

- The Quickstop Commercial Fire Sprinkler Tool is the fastest and easiest to use fire sprinkler shutoff tool on the market. It also works on more fire sprinkler types and sizes than any other tool. When accidents happen with fire sprinklers, seconds matter. That's why the Quickstop Commercial Tool is the tool of choice for reducing water damage and protecting buildings across the world.
- The Quickstop Commercial Tool is the ONLY sprinkler tool on the market that stops water damage even if the sprinkler heads are intact, damaged or completely sheared off.
- Works on upright, pendant and sidewall fire sprinklers as well as recessed heads.
- Quick, simple one-handed operation.
- Engineered from the toughest components, the tool is completely reusable.
- Tested to hold 100% watertight up to 350 PSI or 2400 KPA.
- Each tool is designed with a FUSIBLE LINK which releases the tool when heated. This allows the sprinkler head to start again if a fire was to start.
- 5 year limited warranty.



# SAFETY TAPES

Arrow Work and Safety Gear source and supply a range of safety tapes. We have ensured that we hold a range of tapes for any situation and purpose. Whether you need to corner or barricade off an area, remind customers of social distancing or secure and colour code electrical wires, we have the tape for you.

Some of our most popular safety tapes include our red and white barricade tape. Arrow Safety ensures that we always have this roll of tape in stock as we often use them for our trade projects or our clients are after it.

Of late, we also started stocking social distancing tape. Arrow Safety likes to make sure our clients find everything they need to keep their premises and customers safe. Our high visibility yellow social distancing tape has been an effective way of ensuring social distancing regulations are maintained.

Additionally, we also have a broad range of cloth/gaffer tapes. These tapes are available in a range of colours to help you secure items, create warnings or colour code things. These cloth/gaffer tapes are general purpose and can be used for a variety of situations.



# SAFETY





# SAFETY TAPES



## YELLOW SOCIAL DISTANCING TAPE X36

CODE : STSD36

- Coloured Print PVC.
- Black on Yellow.
- Social Distancing 1.5M.

WIDTH	LENGTH
50mm	66m



## BARRICADE TAPE

CODE : STBT01

- Our red and white warning tape is created to identify potential risks and hazards in the surrounding areas. It is mainly used to block off construction zones or hazardous areas from pedestrians temporarily. The red and white surface makes the tape highly visible.
- Therefore, it is an efficient way to warn individuals of the possible dangers. Our tape is UV resistant, high strength and non-fading. As a result, it is highly durable and can be used both indoors and outdoors.

LENGTH	WIDTH	WEIGHT	DIMENSIONS	COLOUR
100m	75mm	0.35 kg	100 × 75 mm	Red and White



## YELLOW/BLACK ECONOMY ANTI-SLIP TAPES

CODE : STAS01

- Reduce the risk of slips, trips and falls in and around the workplace. The coarse surface ensures maximum grip even in heavy traffic and wet or greasy conditions. Use this range of tapes to achieve maximum anti-slip protection whilst warning of dangerous areas. It can be used throughout all areas of your facility stairs, ramps, steps, entrances, exits and many more.
- Easy to use - simply cut to size, peel off the backing and apply.
- Not recommended for pressure-treated wood surfaces.



## BLACK & YELLOW CAUTION TAPE

CODE : STCT01

- Double sided yellow and black printed tape.
- Useful for temporary situations to identify hazards and work zones.
- Non-adhesive so tape can be removed easily from the premise.

WIDTH	LENGTH
72mm	100m



## BLACK CLOTH TAPE

CODE : STBC01

- Premium grade waterproof cloth perfect for various applications.
- Useful for book binding, bundling, colour coding, repairs etc.
- Moisture resistant.
- Secures firmly.

WIDTH	LENGTH
48mm	25m



## WHITE CLOTH TAPE

CODE : STWC01

- Premium grade and waterproof.
- Perfect for binding, bundling, repairs etc.
- Moisture resistant.
- Firmly secures items.

WIDTH	LENGTH
48mm	25m

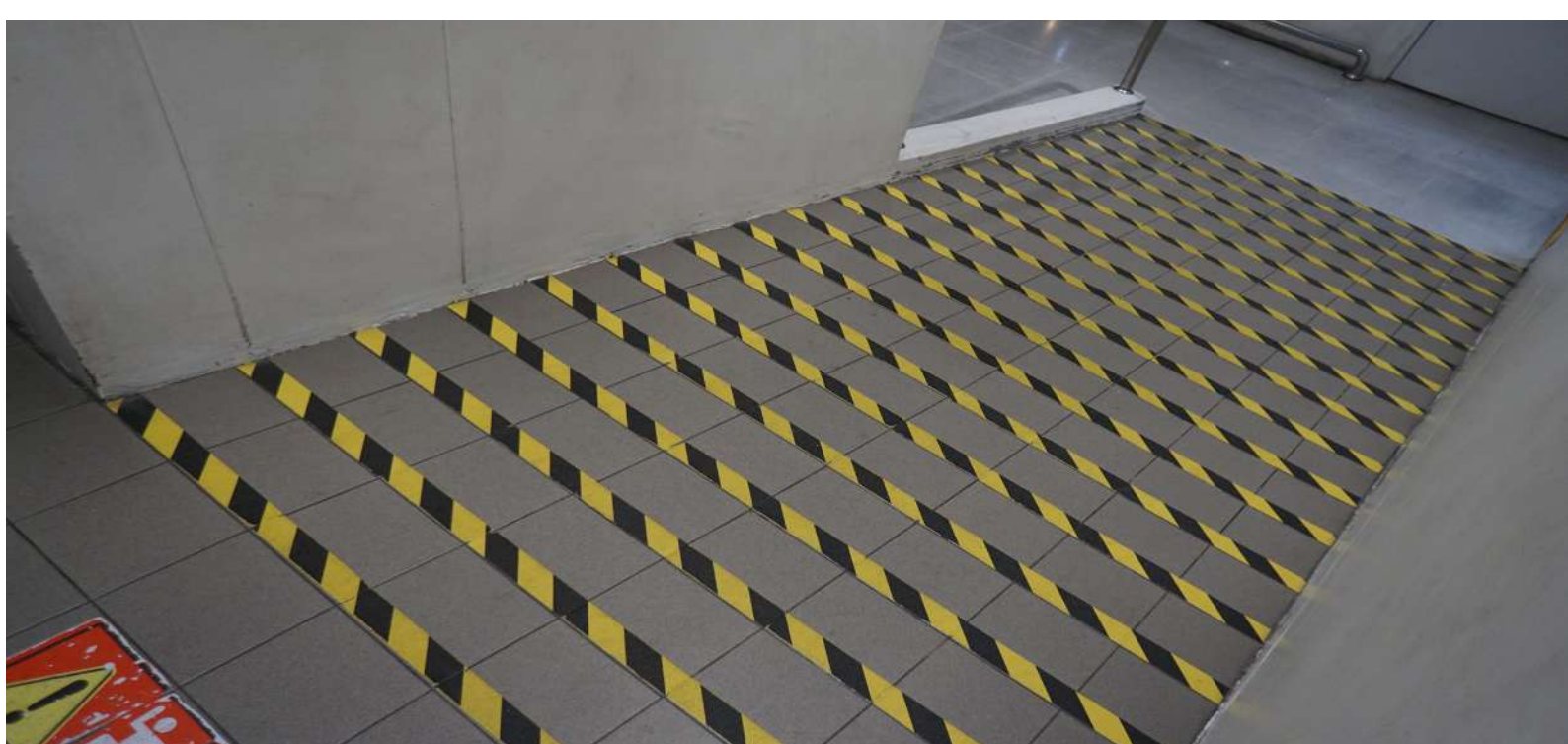


## DOUBLE SIDED TAPE

CODE : STDS01

- Acrylic adhesive on both sides.
- Acid free.

WIDTH	LENGTH
12mm	33m



# SAFETY TAPES



## CL1 HIP-4100 REFLECT FLUORO YELLOW/GREEN TAPE

CODE : STRF01

- Highly reflective and waterproof
- Self-adhesive film and high corrosion resistance
- Made with a UV stabilised acrylic from film
- Perfect for traffic signs and outdoor uses

WIDTH	LENGTH
48mm	45.7m



## CLASS 1 TAPE

CODE : STRG01

- Durable and high intensity reflective graphics
- Can be used on cars, utilities, commercial signs, and hazard warnings
- Can provide long-lasting reflective impact for up to 10 years
- Made from polyester film and micro-prismatic sheet with a acrylic adhesive

WIDTH	LENGTH
48mm	45.7m



## BARRICADE 'DANGER' BLACK/RED/WHITE TAPE

CODE : STBD01

- 'Danger Do Not Enter'
- Used to identify hazardous situations
- Perfect for workplaces, construction sites, shopping centres and schools

WIDTH	LENGTH
72mm	100m



## ANTI-SLIP TAPE

CODE : BLACK- STAS02, YELLOW-STAS03

- Colours available: yellow and black
- Durable tape with long ageing adhesive
- Helps prevent slips on surface
- Useful in workplaces, warehouses, stairs, entrances and exits
- AS/NZS 4586:2004 certified

WIDTH	LENGTH
48mm	18.2m





## SILVER CLOTH TAPE

CODE : STSC01

- Premium grade waterproof cloth
- Useful for book binding, bundling, colour coding, repairs etc.
- Moisture resistant
- Strong adhesive to secure firmly

WIDTH	LENGTH
48mm	25m



## ELECTRICAL INSULATION TAPE – 12 ROLLS

CODE : STEI01

- Tough PVC film that is flexible
- Moisture & weather resistant
- Resistant to chemicals including dilute acids and alkalis
- Used to secure cables, over foam insulation of beer pythons, colour code cables

WIDTH	LENGTH
18mm	10m





# WORKWEAR

Arrow Work & Safety Gear stocks a broad range of workwear, including uniforms, PPE, shoes, hats, and masks.

Our workwear range includes hi-vis options for those working on-site in all conditions. Our shirts, polos, vests, singlets, and jackets are all available in hi-vis options. We have a broad range of clothing items that meet the Australian standard, AS/NZS 4602.1:2011. Additionally, we have corporate uniforms such as blouses, shirts, pants, jackets, skirts, and belts, made with comfort and style. Our team can also have uniforms customised with logos and other branding.

Additionally, our clothing has diverse features such as water and oil repellent, mechanical stretch, breathable materials, and moisture-wicking properties.

We carry a range of Personal Protection Equipment (PPE). PPE refers to any item of clothing that reduces the potential danger to a worker's health and safety. This includes our gloves, hats, goggles, and masks. We stock workmen and nitrile examination gloves, which are suitable for many purposes including mining, steel fabrication, automotive, construction, engineering and, plumbing. In our safety hats, we have several Hammerheads and hard hats for ultimate heat and sun protection.

Our goggles come with a variety of lenses to protect our customers, such as anti-fog and reflective smoke, silver mirror, polarised, and photochromatic. Our face masks include disposable masks for bacteria protection, particulate conical masks, and a twin filter half mask.

Our work shoes have maximum protection and comfort. We aim to provide this by stocking a range of shoes with various features, such as steel toe caps, memory foam, breathable mesh and padded collars.

# MEN'S

# WORK WEAR FITTING GUIDE

MENS PANT/SHORT - REGULAR	67R	72R	77R	82R	87R	92R	97R	102R	107R	112R	117R	122R	127R	
MENS PANT - STOUT					87S	92S	97S	102S	107S	112S	117S	122S	127S	132S
FITS WAIST (CM)	67	72	77	82	87	92	97	102	107	112	117	122	127	132
FITS WAIST (IN)	26	28	30	32	34	36	38	40	42	44	46	48	50	52
PANT IN LEG SEAM - REGULAR	83	83	83	83	83	83	83	83	83	83	83	83		
PANT IN LEG SEAM - STOUT					78	78	78	78	78	78	78	78	78	78
MENS PANT - LONG		74L	79L	84L	89L	94L								
FITS WAIST (CM)		74	79	84	89	94								
FITS WAIST (IN)		29	31	33	35	37								
PANT IN LEG SEAM - LONG		88	88	88	88	88								
MENS COVERALL-REGULAR	67R	72R	77R	82R	87R	92R	97R	102R	107R	112R	117R	122R		
MENS COVERALL - STOUT					87S	92S	97S	102S	107S	112S	117S	122S	127S	132S
FITS WAIST (CM)	67	72	77	82	87	92	97	102	107	112	117	122	127	132
FITS WAIST (IN)	26	28	30	32	34	36	38	40	42	44	46	48	50	52
FITS CHEST- REGULAR (CM)	77	82	87	92	97	102	107	112	117	122	127	132		
FITS CHEST- STOUT (CM)					92	97	102	107	112	117	122	127	132	137
IN LEG SEAM - REGULAR	70	73	76	79	81	84	85	86	87	88	88	88	88	89
IN LEG SEAM - STOUT					71	74	76	79	81	82	83	85	86	86
MENS COVERALL - LONG		74L	79L	84L	89L	94L								
FITS WAIST (CM)		74	79	84	89	94								
FITS WAIST (IN)		29	31	33	35	37								
FITS CHEST (CM)		87	92	97	102	107								
IN LEG SEAM - LONG		81	83	85	88	90								
MENS SHIRTS/POLOS/TEES/ FLEECE/JACKET	XXS	XS	S	M	L	XL	2XL	3XL	4XL	5XL	6XL			
FITS WAIST (CM)	82	87	92	97	102	110	118	126	134	142	152			

# WOMEN'S

WOMEN PANT/SHORTS		6	8	10	12	14	16	18	20	22	24			
FITS NATURAL WAIST (CM)		62	67	72	77	82	87	95	103	108	113			
FITS HIP (CM)		88	93	98	103	108	113	121	129	134	139			
WOMEN'S :- POLOS/TEES/ FLEECE		2XS	XS	S	M	L	XL	2XL	3XL	4XL	5XL			
FITS BUST		80	85	90	96	106	114	122	130	138	146			
WOMEN'S SHIRT		6	8	10	12	14	16	18	20	22	24			
FITS BUST		80	85	90	96	102	108	116	124	130	136			



# WORKWEAR (T-Shirts)



## MENS HI-VIS AZTEC POLO - L/S

SYZMIK : ZH249

- 144 Filament supreme microfibre polyester.
- Moisture wicking properties.
- Highly breathable and quick dry.
- Button free placket – Food industry safe.
- Separate loose pocket included.

FABRIC	SIZE
100% Polyester - 175 gsm	XS - 5XL, 7XL



## MENS HI-VIS ASTRO POLO

SYZMIK : ZH245

- 144 Filament supreme microfibre polyester.
- Moisture wicking properties.
- Highly breathable and quick dry.
- Sports style collar.
- Sleeve print design detail with 3M™ reflective stripe.

FABRIC	SIZE
100% Polyester - 175 gsm	XS - 5XL, 7XL



## WAVE HI-VIS SUBLIMATED TEE

DNC : 3562

- LHS button down chest pocket with pen partition.
- Stylish design of "WAVE" sublimated printed on one side of shoulder & front body.
- Full Fluoro back.

FABRIC	SIZE
175gsm 100% polyester micromesh	XS-6XL



## MENS HI-VIS SQUAD S/S POLO

SYZMIK : ZH237

- 144 Filament supreme microfibre polyester.
- Moisture wicking properties.
- Highly breathable and quick dry.
- Chest pocket with pen insert.
- Arm and side panel design detail.
- 3M™ reflective piping detail.

FABRIC	SIZE
100% Polyester - 175 gsm	XS - 5XL, 7XL



## WC HF SPLICED POLO S/S TAPED

KINGGEE : K54215

- Workcool Hyperfreeze is a market leading cooling innovation that harnesses your sweat to lower the temperature of the fabric and keep you cool.
- Hyperfreeze fabric finish for added cooling.
- Chest pocket with button closure.
- 50mm Reflectec segmented tape - Hoop pattern.
- Flat seam construction for next to body comfort.

FABRIC	SIZE
100% polyester; Weight 165gsm	S - XL



## WC HF SPLICED POLO L/S TAPED

KINGGEE : K54225

- Workcool Hyperfreeze is a market leading cooling innovation that harnesses your sweat to lower the temperature of the fabric and keep you cool.
- Hyperfreeze fabric finish for added cooling.
- Chest pocket with button closure.
- 50mm Reflectec segmented tape - Hoop pattern.
- Flat seam construction for next to body comfort.

FABRIC	SIZE
100% polyester; Weight 165gsm	S - 4XL



## WC WMNS HF SPLICED POLO S/S

KINGGEE : K44735

- Our women's range features everything you've come to expect from KingGee - with a fit tailored specifically for women. The KingGee women's range will have you looking and performing your best every day.
- Hyperfreeze fabric finish for added cooling.
- Chest pocket with button closure.
- Flat seam construction for next to body comfort.

FABRIC	SIZE
100% polyester; Weight 165gsm	XS - 3XL



## WC HF SPLICED POLO S/S

KINGGEE : K54205

- Workcool Hyperfreeze is a market leading cooling innovation that harnesses your sweat to lower the temperature of the fabric and keep you cool.
- Hyperfreeze fabric finish for added cooling.
- Chest pocket with button closure.
- Flat seam construction for next to body comfort.

FABRIC	SIZE
100% Polyester 165gsm	S - 3XL

# WORKWEAR (T-Shirts)



## MENS HI-VIS SQUAD L/S POLO

SYZMIK : ZH238

- 144 Filament supreme microfibre polyester.
- Moisture wicking properties.
- Highly breathable and quick dry.
- Chest pocket with pen insert.
- Arm and side panel design detail.
- 3M™ reflective piping detail.

FABRIC	SIZE
100% Polyester - 175 gsm	XS - 5XL, 7XL



## MENS HI-VIS ZONE POLO

SYZMIK : ZH236

- 144 Filament supreme microfibre polyester.
- Moisture wicking properties.
- Highly breathable and quick dry.
- Sleeve print design detail.
- 3M™ reflective piping detail.

FABRIC	SIZE
100% Polyester - 175 gsm	XS - 5XL, 7XL



## UNISEX HI-VIS BASIC SPLICED POLO - SHORT SLEEVE

SYZMIK : ZH231

- 144 Filament supreme microfibre polyester.
- Moisture wicking properties. Highly breathable and quick dry.
- Chest pocket with pen insert.
- COLOURS : Yellow/Charcoal, Yellow/Navy, Orange/Navy, Orange/Charcoal, Orange/Black, Yellow/Black.

FABRIC	SIZE
100% Polyester - 175 gsm	XS - 5XL, 7XL



## UNISEX HI-VIS BASIC SPLICED POLO - LONG SLEEVE

SYZMIK : ZH232

- 144 Filament supreme microfibre polyester.
- Moisture wicking properties.
- Highly breathable and quick dry.
- Chest pocket with pen insert.
- COLOURS : Yellow/Charcoal, Yellow/Navy, Orange/Navy, Orange/Charcoal, Orange/Black, Yellow/Black.

FABRIC	SIZE
100% Polyester - 175 gsm	XS - 5XL, 7XL





## MENS HI-VIS TEE SHIRT

SYZMIK: ZH290

- Soft lightweight and breathable fabric.
- Natural feel against the skin for comfort.
- Modern fit.
- Taped shoulder and neck to help maintain shape.

FABRIC	SIZE
85% Polyester 15% Rayon - 180 gsm	XS - 5XL, 7XL



# WORKWEAR (T-Shirts/New Addition)



## MENS NITRO POLO

BIZ : P10112

- Contrast panel with piping.
- Knitted collar and cuff.
- Side splits with twill tape.
- Loose pocket included.
- UPF rating - Excellent.

FABRIC	SIZE
65% Polyester, 35% Cotton Pique Knit - low pill yarn 210 GSM	S - 3XL, 5XL



## LADIES RAZOR POLO

BIZ : P405LS

- Grid mesh underarm panels for breathability.
- Unique sleeve print feature.
- Contrast panels and piping.
- Knitted collar with contrast placket.
- UPF rating - Excellent.

FABRIC	SIZE
100% BIZ COOL™ Polyester Sports Interlock 155 GSM	XS - 3XL



## WORKCOOL SPLICED POLO SHORT SLEEVE

KINGGEE : K54845

- Workcool Hyperfreeze is a market leading cooling innovation that harnesses your sweat to lower the temperature of the fabric and keep you cool.
- Hyperfreeze fabric finish for added cooling.
- Side mesh panels for increased airflow and cooling.
- Welt chest pocket with button closure and pen partition.
- Flat seam construction for next to body comfort.

FABRIC	SIZE
100% Polyester 170gsm	S - 4XL



## HI-VIS SEGMENT TAPED MIRCOMESH POLO - SHORT SLEEVE

DNC : 3511

- Cool-breathe mircomesh with moisture wicking feature.
- Two tone front only.
- LHS button down chest pocket with pen partition.
- Hoop pattern superior quality heat transfer segmented reflective tape, lighter weight & innovative pattern, stretch with garment's fabric to add more comfort for movement.

FABRIC	SIZE
100% polyester soft feel micromesh	XS - 6XL



## HI-VIS SEGMENT TAPED COTTON JERSEY POLO - SHORT SLEEVE

DNC : 3515

- Under arm cotton mesh vents, two tone front only.
- LHS button down chest pocket with pen partition.
- Hoop pattern superior quality heat transfer segmented reflective tape, lighter weight & innovative pattern, stretch with garment's fabric to add more comfort for movement, anti-static for both fabric & segmented tape.

FABRIC	SIZE
200gsm Comb Cotton Jersey	XS - 6XL



## HI-VIS SEGMENT TAPED MICROMESH POLO - LONG SLEEVE DNC : 3513

- Cool-Breathe micromesh with moisture wicking feature.
- Two tone front only.
- LHS button down chest pocket with pen partition.
- Hoop pattern superior quality heat transfer segmented reflective tape, lighter weight & innovative pattern, stretch with garment's fabric to add more comfort for movement.

FABRIC	SIZE
175gsm 100% Premium Polyester	XS - 6XL



## HI-VIS SEGMENT TAPE COTTON JERSEY POLO - LONG SLEEVE DNC : 3516

- Under arm cotton mesh vents, two tone front only.
- LHS button down chest pocket with pen partition.
- Hoop pattern superior quality heat transfer segmented reflective tape, lighter weight & innovative pattern, stretch with garment's fabric to add more comfort for movement, anti-static for both fabric & segmented tape.

FABRIC	SIZE
200gsm Comb Cotton Jersey	XS - 6XL



## BYRON MENS POLO

BIZ : P011MS

- Luxe feel Cotton-rich jersey.
- Fabric feels cool and comfortable.
- Mens style has a modern self fabric collar and button placket.
- Mens style includes loose pocket.

FABRIC	SIZE
75% Cotton, 25% Polyester, Plated Jersey 190 GSM	S - 5XL



## MENS RAZOR POLO

BIZ : P405MS

- Grid mesh underarm panels for breathability.
- Unique sleeve print feature.
- Contrast panels and piping.
- Knitted collar with contrast placket.
- Loose pocket included.

FABRIC	SIZE
100% BIZ COOL™ Polyester Sports Interlock 155 GSM	S - 5XL



## MENS CREW POLO

BIZ : P400MS

- Durable top-stitched armhole and twin needle sleeve/hem.
- Knitted flat collar for sleek appearance.
- Loose pocket included.
- UPF rating - Very Good (light colours), Excellent (dark colours).

FABRIC	SIZE
65% Polyester, 35% Cotton Pique 210 GSM	S - 3XL



# WORKWEAR (Shirts)



## WOMENS HI-VIS SPLICED INDUSTRIAL SHIRT - HOOP TAPED SYZMIK: ZWL123

- 170 gsm mid weight cotton twill to keep you cool while still being tough enough for any job.
- Underarm and upper back mesh vent inserts to keep you cool in any environment.
- Darted for feminine fit.
- Triple stitched seams.
- 3M™ 8910 reflective tape in hoop configuration.
- Two chest pockets with button closures and pen partition
- Extended curve shirt back.

FABRIC	SIZE
100% Cotton Twill - 170 gsm	8 - 24



## MENS HI-VIS SPLICED INDUSTRIAL SHIRT - SHOULDER TAPED SYZMIK: ZW124

- 170 gsm mid-weight cotton twill to keep you cool while still being tough enough for any job.
- Underarm and upper back mesh vent inserts to keep you cool in any environment.
- Triple stitched seams.
- 3M™ 8910 reflective tape in H configuration.
- Two chest pockets with button closures and pen partition
- Extended curve shirt back.

FABRIC	SIZE
100% Cotton Twill - 170 gsm	S - 5XL, 7XL



## MENS HI-VIS SPLICED INDUSTRIAL SHIRT SYZMIK : ZW122

- 170 gsm mid weight cotton twill to keep you cool while still being tough enough for any job.
- Underarm and upper back mesh vent inserts to keep you cool in any environment.
- Triple stitched seams.
- Two chest pockets with button closures and pen partition
- Extended curve shirt back.

FABRIC	SIZES
100% Cotton Twill - 170 gsm	XS - 5XL, 7XL



## HI-VIS COOL-BREEZE COTTON SHIRT WITH 'X' BACK DNC : 3746

- Under arm cotton mesh vents.
- Twin button down flap pocket.
- Cross back style with additional tape on tail.
- 3M 8906 R/Tape.

FABRIC	SIZE
155gsm lightweight cotton	XS-6XL



## MENS RUGGED COOLING TAPED HI-VIS SPLICED SHIRT SYZMIK : ZW129

- Mesh venting to increase breathability in the underarm, upper back, front side seam and backside seam.
- Mechanical stretch to give you more freedom of movement
- 2 Chest pockets with pen partition.
- 3M™ 8910 breathable reflective tape in hoop configuration
- Reinforced at all key stress points with bar tacks.

FABRIC	SIZE
100% Square Weave Cotton Ripstop - 145 gsm	XXS - 5XL, 7XL



## WORKCOOL 2 SHIRT LONG SLEEVE

KINGGEE : K14820

- KingGee Workcool does what it says - keeps you cool while you're working. Technology and innovation are delivered in spades with this range, delivering maximum comfort in hot conditions.
- Lightweight breathable fabric.
- Two secure chest pockets with pen partition.
- Underarm, upper back and side cooling vents.
- 3 piece collar with extensions for added sun protection.

FABRIC	SIZE
Cotton Ripstop with Heavy Duty Mesh, Weight 145gsm	2XS - 4XL



## MENS RUGGED COOLING S/S SHIRT

SYZMIK : ZW405

- Back waist venting to maximise airflow and keep you cool.
- Mechanical stretch to give you more freedom of movement.
- 10 multi-functional pockets so you have a place for everything.
- Mobile phone and ruler pocket.
- Reflective tape.
- Plastic D hoop for ID or key ring.
- Double layer hem for durability.
- Reinforced at all key stress points with bar tacks.
- Modern fit.

FABRIC	SIZE
100% Square Weave Cotton Ripstop - 240 gsm	72 - 132



## MENS RUGGED COOLING L/S SHIRT

SYZMIK : ZW400

- Mesh venting to increase breathability in the underarm, upper back, and backside seam.
- Mechanical stretch to give you more freedom of movement.
- Two Chest pockets with pen partition.
- Arm pocket.
- Roll up sleeve tab.
- Modern fit.

FABRIC	SIZE
100% Square Weave Cotton Ripstop - 145 gsm	XXS - 5XL, 7XL



## MENS OUTDOOR L/S SHIRT

SYZMIK: ZW460

- Our lightest weight shirt ever at just 100 gsm.
- Super breathable lightweight fabric to keep you cool all day.
- Extra-large underarm mesh and upper back venting to maximise air flow.
- Crinkle resistant lightweight fabric makes this shirt easy to pack in a small bag.
- Two chest pockets.
- One mobile phone chest zip pocket.
- Roll up tab sleeves.
- Contrast colour inside placket.

FABRIC	SIZE
155gsm lightweight cotton	XS-6XL

# WORKWEAR (Shirts)



## MENS HI-VIS OUTDOOR SEGMENTED TAPE L/S SHIRT

SYZMIK : ZW470

- Segmented tape to improve comfort, movement, and breathability.
- Our lightest weight shirt ever at just 100 gsm.
- Super breathable lightweight fabric to keep you cool all day.
- Underarm mesh and upper back venting to maximise air flow.
- Crinkle resistant light weight fabric makes this shirt easy to pack in a small bag.

FABRIC	SIZE
100% Polyester Ripstop - 100 gsm	XXS - 5XL, 7XL



## MENS HI-VIS X BACK TAPED SHIRT

SYZMIK : ZW690

- 160 gsm mid weight Cotton twill to keep you cool while still being tough enough for any job.
- Underarm and upper back mesh vent inserts to keep you cool in any environment.
- Bio Motion tape configuration to improve recognition of human shape at distance.
- NSW rail compliant X back taping configuration.
- Two chest pockets with button closures and pen partition.

FABRIC	SIZE
100% Cotton Twill - 160 gsm	XXS - 5XL, 7XL



## MENS HI-VIS SPLICED INDUSTRIAL SHIRT - HOOP TAPED

SYZMIK: ZW123

- 170 gsm mid weight cotton twill to keep you cool while still being tough enough for any job.
- Underarm and upper back mesh vent inserts to keep you cool in any environment.
- Triple stitched seams.
- 3M™ 8910 reflective tape in hoop configuration.
- Two chest pockets with button closures and pen partition.
- Extended curve shirt back.

FABRIC	SIZE
100% Cotton Twill - 170 gsm	XXS - 5XL, 7XL



## WORKCOOL 2 REFLECTIVE SPLICED SHIRT S/S

KINGGEE : K54885

- Lightweight breathable fabric.
- Two secure chest pockets with pen partition.
- Underarm, upper back and side cooling vents.
- 50mm Reflectec Tape - Hoop pattern.
- 3 piece collar with extensions for added sun protection.
- Delivered in spades with this range, delivering maximum comfort in hot conditions.

WEIGHT	MATERIALS
Weight 145gsm	Cotton Ripstop with heavy duty mesh

## MENS BIO MOTION X BACK TAPED SHIRT

SYZMIK : ZW621

- Compliant to Australian nighttime road work requirements with X back configuration.
- Bio Motion tape configuration to improve recognition of human shape at distance.
- Made from durable hard wearing cotton drill.
- Two chest pockets.

FABRIC	SIZE
100% Cotton Drill - 190 gsm	XXS - 5XL, 7XL





## HI-VIS D/N TWO TONE DRILL SHIRT

DNC : 3536

- Open Front.
- Twin Button Down Flap Pocket.
- Hoop Pattern CSR Reflective Tape.
- Long Sleeve.

FABRIC	SIZE
100% Polyester - 175 gsm	XS - 5XL, 7XL



## MENS RUGGED COOLING HI-VIS SEGMENTED TAPE L/S SHIRT SYZMIK : ZW229

- Segmented tape to improve comfort, movement, and breathability.
- Mesh venting to increase breathability in the underarm, upper back, and backside seam.
- Mechanical stretch to give you more freedom of movement.
- Two chest pockets with pen partition.
- Reinforced at all key stress points with bar tacks.

FABRIC	SIZE
100% Square Weave Cotton Ripstop - 145 gsm	XXS - 5XL, 7XL



## WORKCOOL 2 SHIRT S/S

KINGGEE : K14825

- KingGee Workcool does what it says - keeps you cool while you're working. Technology and innovation are delivered in spades with this range, delivering maximum comfort in hot conditions.
- Lightweight breathable fabric.
- Two secure chest pockets with pen partition.
- Underarm, upper back and side cooling vents.
- 3 piece collar with extensions for added sun protection.

FABRIC	SIZE
Cotton Ripstop with Heavy Duty Mesh, Weight 145gsm	2XS - 4XL



## CORE L/SL TWO TONE VENTED SHIRT

HARDYAKKA: Y07950

- Twin chest pockets with flap and button closure.
- Venting at back yoke with mesh.
- Underarm mesh gusset.
- Double fold front placket with button closure.

FABRIC	SIZE
145gsm Cotton Twill	S - 5XL



## CORE L/SL TWO TONE TAPED VENTED SHIRT HARDYAKKA : Y07940

- Twin chest pockets with flap and button closure.
- Venting at back yoke with mesh.
- Underarm mesh gusset.
- Double fold front placket with button closure.
- Reflectec Tape.

FABRIC	SIZE
145gsm Cotton Twill	S - 5XL

# WORKWEAR (Pants)



## DURATEX COTTON DUCK WEAVE CARGO PANTS - NOT KNEE PADS

(DNC 3335)

- 10 multi-functional pockets.
- Including double flap cargo pockets.
- Mobile phone pockets.
- Tool & ruler pockets with pen division.
- Two front side pockets.
- Two back pockets.
- Air flow eyelets between legs.
- Heavy duty nylon key ring, hammer loop.
- Duratex patches in knees & stress areas.
- Knee pad access with hook & loop fasteners closure.

FABRIC	SIZE
100% Cotton Twill - 170 gsm	72R-112R, 87S-132S



## MENS ULTRALITE MULTI-POCKET PANT

SYZMIK : ZP509

- Features 2 swing away pockets that can be tucked away when not in use.
- The swing-away pockets act a built-in tool belt and allow you to carry all your tools without the tools rubbing against your leg or restricting your movement.
- Strong, lightweight fabric due to superior ripstop construction.

FABRIC	SIZE
65% Polyester 35% Cotton	72 - 132



## SUMMER TRADIE PANTS

KINGGEE : K13290

- Narrow fit pant.
- 12 multi-functional pockets.
- Large bellow cargo pocket, mobile phone pocket, wide entry side hip pocket.
- Light enzyme wash for instant comfort.
- Triple stitched crotch with reinforced seat.

FABRIC	WEIGHT
100% cotton drill	190gsm



## MENS RUGGED COOLING CARGO PANT (REGULAR)

SYZMIK : ZP504

- Back waist venting to maximise airflow and keep you cool.
- Mechanical stretch to give you more freedom of movement.
- 10 multi-functional pockets so you have a place for everything.
- Mobile phone and ruler pocket.
- Plastic "D" hoop for ID or key ring.
- Double layer hem for durability.

FABRIC	SIZE
100% Square Weave Cotton Ripstop	72 - 132



## WOMENS RUGGED COOLING PANT

SYZMIK : ZP704

- Back waist venting to maximise airflow and keep you cool.
- Mechanical stretch to give you more freedom of movement.
- 10 multi-functional pockets so you have a place for everything.
- Mobile phone and ruler pocket.
- Plastic D hoop for ID or key ring.
- Double layer hem for durability.
- Reinforced at all key stress points with bar tacks.

FABRIC	SIZES
100% Square Weave Cotton Ripstop - 240 gsm	4 - 24



## MENS RUGGED COOLING TAPED PANT

SYZMIK : ZP904

- Back waist venting to maximise airflow and keep you cool.
- Mechanical stretch to give you more freedom of movement.
- 10 multi-functional pockets so you have a place for everything.
- Mobile phone and ruler pocket.
- Reflective tape.
- Plastic D hoop for ID or key ring.

FABRIC	SIZE
100% Square Weave Cotton Ripstop - 240 gsm	72 - 132



## KINGGEE DRYCOOL PANT

KINGGEE : K13007

- Moisture control fabric with a stretch ripstop construction.
- LHS cargo pocket with touch tape closure.
- RHS cargo pocket with zip closure.
- Airflow vents on inner leg.
- Crotch gusset for improved movement.

FABRIC	SIZE
94% Nylon 6% Spandex 140gsm	67R-112R



## WORKCOOL PRO PANT

KINGGEE: K13026

- Comfort stretch waistband with gel grip print.
- Stretch Ripstop fabric for improved movement and durability.
- Crotch gusset for improved movement.
- Behind the knee cooling vents.
- 9 Multi-functional pockets.

FABRIC	SIZE
98% Cotton Ripstop, 2% elastane 237gsm	67R-132S



# WORKWEAR (PANTS)



## DURATEX COTTON DUCK WEAVE TRADIES CARGO PANTS DNC : 3337

- 14 multi-functional pockets.
- Including twin waist holster double tool pockets that can be tucked in.
- Double cargo pockets, mobile phone pockets, tool & ruler pockets with pen division, two front side pockets, two back pockets. Air flow eyelets between legs.
- Heavy duty nylon key ring, hammer loop.

FABRIC	SIZE
285gsm, 100% Canvas	72R-112R, 87S-132S



## COTTON DRILL WORK PANTS

DNC : 3311

- Heavyweight 311gsm cotton drill.
- Pleat front.
- Heavy duty nylon zip.

FABRIC	SIZE
100% Bonded Polyester	72R-112R, 87S-132S, 74L-94L, 87S-152S



## MENS BIO MOTION TAPED PANT

SYZMIK : ZP920

- Compliant with Australian night time road work requirements with double hoop leg tape.
- Bio Motion tape configuration to improve recognition of human shape at distance.
- Made from durable hard wearing cotton drill.
- Large cargo pocket with unique side zip pocket built into bellow.

FABRIC	SIZE
100% Cotton Drill - 280 gsm	72 - 132



## LIGHTWEIGHT COTTON CARGO PANTS WITH 3M R/TAPE DNC : 3326

- Comfort fit.
- One side contains large flap pocket.
- The other side contains a tool and mobile phone pocket.
- Nylon zip and plastic button.
- 3M 8906 reflective tape.

FABRIC	SIZE
190gsm lightweight cotton drill	72R-112R 87S-132S 74L-94L



## MENS TAPED UTILITY PANT (REGULAR)

SYZMIK : ZW004

- 280gsm mid-weight pre-shrunk cotton drill to keep you cool while still being tough enough for any job.
- Reflective tape.
- Reinforced double layer heel and pocket patches.
- Wide belt loops.
- Triple stitched seams for extra durability.
- Discrete side welt pocket.

FABRIC	SIZE
100% Cotton Twill - 280 gsm	72 - 132



## MENS MIDWEIGHT DRILL CARGO PANT (REGULAR)

SYZMIK : ZW001

- Multi-pocket cargo pant.
- 280 gsm mid-weight pre-shrunk cotton drill to keep you cool while still being tough enough for any job.
- Inset crotch panel.
- Triple stitched seams for extra durability.
- Reinforced double layer knee, heel and pocket patches.
- Wide belt loops.
- Side welt pocket.

FABRIC	SIZE
100% Cotton Twill - 280 gsm	72R - 132R



## MENS MIDWEIGHT DRILL CARGO PANT (REGULAR)

SYZMIK : ZP320

- Contrast 4-way stretch panel at the back of the knee and in the crotch provides stretch in every direction to increase movement and durability.
- Soft stretch cotton provides increased freedom of movement and comfort.
- Lightweight fabric to keep you cool.
- Unique stretch pleating front pockets and above knee for added stretch.
- Modern slim fit.
- Two large pockets with black bonded zips and Syzmik rubber zipper heads.

FABRIC	SIZE
Fabric - 97% Cotton 3% Spandex - 260 gsm Panel - 94% Polyester 6% Spandex	72 - 127



## MENS STREETWORX COMFORT PANT

SYZMIK : ZP444

- Hidden French terry lining gives the comfort of your favourite track pant with the durability needed for the worksite.
- Stretch fabric and waistband for comfort and freedom of movement at work.
- Double layer knee.
- Diamond-shaped crotch panel for increased durability.
- One large cargo pocket.
- One mobile phone pocket with flap closure.
- One ruler pocket and pen partition.
- Two back hip pockets.

FABRIC	SIZE
67% Cotton 31% Polyester 2% Spandex - 280 gsm	72R - 132R

# WORKWEAR (PANTS)



## KINGGEE DRYCOOL PANT

KINGGEE : K13007

- Moisture control fabric with a stretch ripstop construction.
- LHS cargo pocket with touch tape closure.
- RHS cargo pocket with zip closure.
- Airflow vents on inner leg.
- Crotch gusset for improved movement.

FABRIC	SIZE
94% Nylon 6% Spandex 140gsm	67R - 112R



## MENS SUMMER CARGO PANT (REGULAR)

SYZMIK : ZP145R

- Lightweight soft fabric provides cool comfort at work.
- Modern fit and styling.
- Triple stitched crotch panel.
- One large cargo pocket with box pleat for added storage.
- One mobile phone pocket with flap closure.
- One ruler pocket and pen partition.
- Two back hip pockets with stitch pattern design.
- Two side waist pockets with wide openings.

FABRIC	SIZE
100% Cotton - 200 gsm	72R - 132R



## REFLECTIVE DRILL PANTS

KINGGEE : K53020

- Single pleat trousers.
- Wide opening side pockets with Fob pocket.
- Twin back welt pockets.
- Smartphone welt pocket at back.
- 50mm ReflecTEC tape.
- Reinforced stitching at stress points.

FABRIC	SIZE
Cotton Drill	72R - 137S



## RAPTOR PANT

HARD YAKKA: Y02441

- Active Fit Waistband for greater comfort, mobility and fit.
- CTE3 reinforcement on all high abrasion and tear zones
- Sustainable REPREEVE® ECO Ripstop Technology fabric.
- Pocket systems to utilise key reach zones and functional tool storage.
- Triple-needle stitching on all high-stress seams, utility belt loops and heel guard.
- Reflective logo prints for enhanced visibility in low light.

FABRIC	SIZE
Ripstop: 60% Cotton, 38% Polyester	67R - 112R





## WORKCOOL 2 PANTS

**KINGGEE : K13820**

- KingGee Workcool does what it says - keeps you cool while you're working. Technology and innovation are delivered in spades with this range, delivering maximum comfort in hot conditions.
- Modern contoured fit, behind the knee cooling vents
- Ten multi-functional pockets.
- Extra reinforcing with triple stitching.

FABRIC	SIZE
Cotton Ripstop with heavy-duty mesh; Weight 235 gsm	72R - 132S



## CORE CARGO DRILL PANT

**HARDYAKKA : Y02570**

- Slanted front pockets.
- Danted back waist for comfort fit.
- Twin back hip pockets.
- Cargo pocket with box pleat and touch tape closure.
- Utility pocket, ruler pocket and pen pocket RHS.

FABRIC	SIZE
280gsm, 100% cotton drill	72R - 132S



# WORKWEAR (SHORTS)



## MENS PLAIN UTILITY SHORT

SYZMIK : ZW011

- 280 gsm mid-weight pre-shrunk cotton drill to keep you cool while still being tough enough for any job.
- Reinforced double layer pocket patches.
- Plastic "D" ring to hold ID or keys.
- Wide belt loops.
- Triple stitched seams for extra durability.
- Discrete side welt.

FABRIC	SIZE
100% Cotton Twill - 280 gsm	72 - 132



## DURATEX COTTON DUCK WEAVE TRADIES CARGO SHORTS - WITH TWIN HOLSTER TOOL POCKET

DNC : 3336

- Ten multi-functional pockets.
- Including double cargo pockets.
- Mobile phone pockets, tool & ruler pockets with pen division.
- Two front side pockets.
- Two back pockets (twin waist holster double tool pockets that can be tucked in).

FABRIC	SIZE
285 gsm, 100% Cotton Canvas	72R-132R

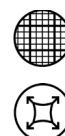


## LADIES DIGGA COOL -BREEZE CARGO SHORTS

DNC : 3335

- Modern side slant cargo & multi-tool pockets with angle zipped pocket above.
- One back flap pocket.
- Heavy duty belt loops.
- 4 Airflow eyelets between legs.

FABRIC	SIZE
265gsm Middle Weight cotton drill	8-24



## WORKCOOL PRO SHORTS

KINGGEE : K17008

- Comfort stretch waistband with gel grip print.
- Stretch Ripstop fabric for improved movement and durability.
- Crotch gusset for improved movement.
- 9 Multi-functional pockets.

FABRIC	SIZES
98% Cotton Ripstop, 2% elastane, 237gsm	67R - 127R



## DURATEX COTTON DUCK WEAVE CARGO SHORTS

DNC : 3334

- Ten multi-functional pockets.
- Including double cargo pockets.
- Mobile phone pockets, tool & ruler pockets with pen division.
- Two front side pockets.
- Two back pockets.
- Heavy-duty nylon key ring & zip fly.
- Hammer loop.
- Duratex patches in stress areas.

FABRIC	SIZE
285gsm, 100% cotton Canvas	72R-132R



## WOMENS PLAIN UTILITY SHORT

SYZMIK : ZWL011

- 280gsm mid-weight pre-shrunk cotton drill to keep you cool while still being tough enough for any job.
- Feminine fit.
- Reinforced double layer pocket patches.
- Wide belt loops.
- Triple stitched seams for extra durability.
- Discrete side welt pocket.

FABRIC	SIZE
100% Cotton Twill - 280 gsm	8 - 24



## MENS RUGGED COOLING SHORT

SYZMIK : ZS507

- Mechanical stretch to give you more freedom of movement.
- Mobile phone pocket.
- Modern shorter fit.
- COLOURS : Charcoal, Navy, Black, Khaki.

FABRIC	SIZE
100% Square Weave Cotton Ripstop - 240 gsm	72 - 132



## MENS STREETWORX STRETCH WORK BOARD SHORT

SYZMIK : ZS240

- Lightweight material for comfort while working.
- Super quick dry fabric is perfect for a quick surf before or after work.
- The 360-degree stretch fabric allows maximum freedom at work and in the surf.
- Mobile phone pocket with drainage holes.
- Cargo pocket with drainage holes.
- Two back and side hip pockets with drainage holes.

FABRIC	SIZE
90% Polyester 10% Elastane - 140 gsm	XXS - 5XL, 7XL



## MENS LIGHTWEIGHT OUTDOOR SHORT

SYZMIK : ZS180

- Super lightweight fabric for comfort in the hottest conditions.
- Stretch fabric for increased freedom of movement and comfort.
- Functional pockets with discrete styling for a professional look.
- One sunglasses zip pocket with microfibre cloth lining, perfect for cleaning your sunglasses.
- One large jet pocket with closure.

FABRIC	SIZE
90% Nylon 10% Spandex - 150 gsm	72R - 132R



## WORKCOOL PRO SHORT

KINGGEE : K17008

- Comfort stretch waistband with gel grip print.
- Stretch ripstop fabric for improved movement and durability.
- Crotch gusset for improved movement.
- Two angled side pockets.
- Internal Utility pocket LHS.
- Two internal back pockets and ruler pocket.

FABRIC	SIZE
98% Cotton 2% Elastane 237gsm	67R - 112R

# WORKWEAR (Vest)



## PINK VEST

ASW : V006N

- H Pattern Silver Tape.
- Horizontal Hook and Keeper Strips.
- Silver Trim.
- The silver reflective tape is 50mm in width.
- The black trim contrasts against the vibrant pink vest colours.
- Comfortable for wearing all day.

FABRIC	SIZE
Polyester	XS-4XL



## VEST WITH FIRE WARDEN PRINT - DAY/NIGHT

ASW : V006FW

- H Pattern Silver Tape.
- Horizontal Hook and Keeper Strips.
- Silver Trim.
- Hook/Keeper.
- Print (front breast): FIRE WARDEN.
- Print (back shoulders): FIRE WARDEN.

FABRIC	SIZE
Polyester	XL - 2XL



## DAY/NIGHT SIDE PANEL SAFETY VESTS

DNC : 3807

- Clear ID pocket,
- Phone & 2 division pen pockets.
- Two sided elastic ribbing panel.
- Zipper closure.
- Hoop style & shoulder strips.
- 3M 8906 Reflective Tape.

FABRIC	SIZE
120gsm 100% Polyester.	S-6XL



## UNISEX HI-VIS SQUAD SINGLET

SYZMIK: ZH239

- 144 Filament supreme microfibre polyester.
- Moisture wicking properties.
- Highly breathable and quick dry.
- Contrast side panel detail.

FABRIC	SIZE
100% Polyester - 175 gsm	XXS - 5XL, 7XL





## WAVE HI-VIS SUBLIMATED SINGLET

DNC : 3561

- Stylish design of "WAVE" sublimated printed on one side of shoulder & front body.
- Full Fluoro back.
- COOL-BREATHE Moisture Absorbency Fabrics.
- Environmentally Friendly Green Dye Oeko-Tex Standard 100 Safe to wear against the skin.
- SUN Protection UPF 40+ -50+

FABRIC	SIZE
175gsm 100% polyester Micromesh	XS-6XL



## VEST ORANGE DAY/NIGHT

ASW : V006DN

- H Pattern Silver Tape.
- Horizontal Hook and Keeper Strips.
- Silver Trim.
- Day/Night Use.
- Comfortable for wearing all day.

FABRIC	SIZES
Polyester	S - 2XL



# WORKWEAR (Coveralls)



## COTTON DRILL COVERALL

**DNC : 3101**

- Tool pocket lower leg.
- Metal press studs.
- Hi-vis applies to Orange ONLY.

FABRIC	SIZE
Heavyweight 311gsm, cotton drill	77R - 112R, 92S - 132S



## COTTON DRILL BIB AND BRACE OVERALL

**DNC : 3111**

- Tool pocket lower leg.
- Metal buttons & buckles.
- Colour : Navy, White.

FABRIC	SIZE
Heavyweight 311gsm cotton drill	77R-107R, 92S-132S



## COTTON DRILL ACTION BACK OVERALL

**DNC : 3121**

- Double layer knee.
- Tool and phone pockets lower leg.
- Metal press studs.
- Colour : Khaki, Navy, White.
- Double layer knee.

FABRIC	SIZE
Heavyweight 311gsm cotton drill	77R-107R, 92S-132S



## PATRON SAINT® FLAME RETARDANT TWO TONE DRILL OVERALL

**DNC : 3425**

- Press studs & gusset sleeves.
- Two Tone hi-vis Coverall with flap cargo pocket on lower leg.
- Complies with international F/R Standards: BS EN ISO 11612:2008.
- Protect against heat and flame.
- Safe to wear against skin.

FABRIC	SIZE
Fabric: 311 gsm Cotton Drill	77R-112R, 92S-132S



## HI-VIS REFLECTIVE SPLICED COMBINATION DRILL OVERALL KINGGEE: K51525

- Fly front with nickel press stud closure.
- Two chest pockets.
- Pen partition LHS.
- Back patch pocket.
- 50mm Reflectec Tape - 50mm Hoop pattern.
- Tool pocket inside seam.

FABRIC	SIZE
Cotton Drill	82R - 137S



## MENS BIO MOTION X BACK OVERALL

SYZMIK : ZC620

- Compliant with Australian night time road work requirements with X back configuration.
- Bio Motion tape configuration to improve recognition of the human shape at distance.
- Made from durable hard wearing cotton drill.
- Two chest pockets with pen partition.
- Two side hip pockets.
- One back hip pocket.
- Two side access pockets to reach your internal pant pockets.
- Press stud closure.

FABRIC	SIZE
100% Cotton Drill - 310 gsm	3/77 - 12/122



# CORPORATE WEAR



## LADIES MADISON SHORT SLEEVE

BIZ : S628LS

- Designed to work.
- The Madison short sleeve blouse is big on features and low on maintenance. Incorporating a secret button to prevent gaping, a built-in action back pleat and functional, easy-care fabric.
- It's the perfect choice for practical, everyday comfort.

FABRIC	SIZE
100% Mechanical Stretch Polyester	6 - 26



## LADIES PLAIN OASIS 3/4 SLEEVE SHIRT - BIZ LADIES : LB3600, MEN : SH3603

- Open neckline with slimline placket
- Curved hem - can be worn in or out
- UPF rating - Very Good

FABRIC	SIZE
BIZ COMFORTCOOL™ Performance Fabric 100% Yarn Wicked Breathable Polyester	6 - 26



## LADIES PLAIN OASIS SHORT SLEEVE SHIRT -BIZ LADIES : LB3601, MEN : SH3603

- Open neckline with slimline placket.
- Curved hem - can be worn in or out.
- PF rating - Very Good.

FABRIC	SIZE
BIZ COMFORTCOOL™ Performance Fabric 100% Yarn Wicked Breathable Polyester	6 - 26



## MENS METRO SHORT SLEEVE SHIRT - BIZ LADIES : LB7301 , MEN : SH715

- Modern style with tapered fit and curved hem.
- Standard collar and left chest pocket.
- UPF rating - Very Good.

FABRIC	SIZE
65% Polyester, 35% Cotton Poplin Fabric	S - 5XL

## LADIES METRO 3/4 SLEEVE SHIRT

BIZ : LB7300

- Open neckline with slimline placket.
- Cuffed sleeve and curved hemline.
- UPF rating - Very Good.

FABRIC	SIZE
65% Cotton, 30% Polyester, 5% Elastane	6 - 26





## MENS/LADIES MONACO LONG SLEEVE SHIRT - BIZ LADIES : S77OLL , MEN : S77OML

- Features modern collar, chest pocket and adjustable cuff.
- Curved hem – can be worn in or out.
- UPF rating - Very Good.
- Built in stretch for superior comfort.

FABRIC	SIZE
Cotton-Rich 68% Cotton, 28% Polyester, 4% Elastane	XS - 5XL



## LADIES CLASSIC BELOW KNEE SKIRT

BIZ : BS29323

- Reinforced centre back split.
- Curved waistband.
- 2 Front welt pockets.
- Wider seams and 5cm (1.9in) hem allowance for easy alterations.

FABRIC	SIZE
65% Polyester, 35% Viscose - Easy Care Fabric Mechanical stretch fabric with stretch lining	6 - 26



## MENS WRINKLE FREE CHAMBRAY LONG SLEEVE SHIRT BIZ : SH112

- Button-down collar with tortoise shell buttons.
- 2 Chest pockets with one pen pocket, twin stitched.
- Traditional fit with centre back box pleat.
- Available in Chambray Blue with Tortoise shell buttons.
- UPF rating - Very Good.

FABRIC	SIZE
200gsm Comb Cotton Jersey	XS - 6XL



## MENS CLASSIC FLAT FRONT PANT

BIZ : BS29210

- Modern style with plain flat front.
- Ready-to-wear with finished hem.
- Front side pockets and 2 back hip pockets.
- Wider seams and 5cm (1.9in) hem allowance for easy alterations.

FABRIC	SIZE
65% Polyester, 35% Viscose - Easy Care Fabric Mechanical stretch fabric for extra comfort	72R - 127R

## MENS CLASSIC JACKET

BIZ : BS722M

- Contemporary 2-button tailored jacket with internal welt pocket
- Hidden internal lining zipper for embroidery access

FABRIC	SIZE
65% Polyester, 35% Viscose Machine washable fabric and interlinings, easy care Mechanical stretch for added comfort	87R - 142R

# WORKWEAR (JACKETS)



**MENS GENEVA JACKET**

**BIZ : J307M**

- Stand up collar with soft chin guard.
- Adjustable cuff with tab closure.
- Contrast side zippered pockets with toggles.
- Scalloped longer back tail.
- Bonded contrast textured micro-ribbed fleece.

FABRIC	SIZE
100% Breathable Polyester	S - 3XL, 5XL



**MENS SOFT SHELL JACKET**

**BIZ : J3880**

- 2 Way front zip with movable sliders.
- Wind flap chin guard and stand up collar.
- Outer right chest zippered vertical pocket with metal puller and audio port access.
- Adjustable rubber cuff closures.
- 2 Concealed zippered front pockets with metal pullers.

FABRIC	SIZE
100% Bonded Polyester	S - 3XL, 5XL



**MENS APEX VEST**

**BIZ : J830M**

- Lightly water repellent and wind resistant.
- Stand up collar with soft chin guard.
- Zippers can be interchanged with J744 Zippies to accent your logo.
- Scalloped longer back tail for added warmth.

FABRIC	SIZE
Outer: 100% Polyester Lining: Bonded Textured fleece lining	S - 3XL, 5XL



**MENS SUMMIT JACKET**

**BIZ : J10910**

- Adjustable cuffs with laser cut welded pocket on sleeve.
- Full-zip front with storm flap and elastic drawstring hem.
- Audio port access.
- Detachable adjustable hood.
- Concealed zippered front pocket and internal mobile pocket.

FABRIC	SIZE
Outer: 96% Polyester, 4% Elastane Lining: 100% Polyester	S - 3XL, 5XL



**UNISEX CORE JACKET**

**BIZ : J236ML**

- Concealed front zip with storm placket.
- Concealed hood in collar.
- Right chest and front side zip pockets.
- Inner zipper access for embroidery.
- Body Lining: 100% Polyester Lightweight Poly Fleece.
- Sleeve Lining: 100% Polyester Taffeta.

FABRIC	SIZE
100% Polyester	XXS - 3XL, 5XL



## MENS HI-VIS X BACK TAPED 4-IN-1 WATERPROOF JACKET SYZMIK : ZJ616

- Waterproof and fully seam-sealed.
- Waterproof rating 20,000mm.
- 5,000 Breathability rating.
- Reversible vest zips into a jacket and can be worn separately or combined.
- Vest with warm fleece lining.
- Concealed hood with unique clear panels in the hood to increase peripheral vision while wearing the hood.

FABRIC	SIZE
Fabric - 100% 300D Oxford Polyester	XXS - 5XL, 7XL



## MENS ULTRALITE WATERPROOF JACKET

SYZMIK : ZJ357

- Waterproof and seam-sealed.
- Waterproof rating 10,000mm.
- Mesh lining.
- Chin guard for added comfort.
- Reflective tape.
- Embroidery zip for easy access.
- Stowaway clear ID pouch.
- Audio port access.

FABRIC	SIZE
100% 300D Oxford Polyester	XXS - 5XL, 7XL



## MENS HI-VIS STORM JACKET

SYZMIK : ZJ350

- Quilt-lined with internal pocket.
- Waterproof rating 5,000mm.
- Fully seam-sealed.
- Reflective tape.
- Front flap pockets with side hand warmers.
- Zipped chest pocket with wire management.
- Adjustable cuff fasteners.

FABRIC	SIZE
100% 300D Oxford Polyester	XXS - 5XL, 7XL



## MENS HI-VIS COTTON DRILL JACKET

SYZMIK : ZJ590

- Tough cotton drill outer with warm cotton flannel lining to keep you warm on the coldest days.
- Water and oil repellent finish to keep you looking good.
- Two covered chest pockets with closure.
- Two side waist pockets.
- Plastic Vislon® Zipper.
- 100% Cotton for static neutral safety.

FABRIC	SIZE
100% Cotton Drill - 310 gsm	XXS - 5XL, 7XL



## UNISEX HI-VIS 2-IN-1 X BACK SOFT-SHELL JACKET SYZMIK : ZJ680

- Sleeves zip off to create a vest.
- Water-resistant rating 5,000mm.
- Twin hoop biomotion tape configuration improves recognition of human shape at a distance.
- X back rail taping configuration.
- Two front hip pockets with zips and covers to keep your items safe and dry.
- One chest mobile phone pocket.
- Adjustable cuff fasteners to keep out the elements.

FABRIC	SIZE
100% Oxford Bonded Polyester soft- shell - 330 gsm	XXS - 5XL, 7XL

# WORKWEAR (JACKETS)



## UNISEX MULTI-POCKET HOODIE

SYZMIK : ZT467

- Safety drawstring to prevent catching.
- Woven arm pen pocket in contrast fabric.
- Two angled side hip pockets with closure for mobile phone and tools.
- Two kangaroo pockets to keep your hands warm even on the coldest days.
- Soft warm fleece lining.
- Mesh hood lining.
- Ribbed knit on hem and cuffs.
- Reinforced at all key stress points with bar tacks.

FABRIC	SIZE
55% Cotton 45% Polyester - 320 gsm	XXS - 5XL, 7XL



## UNISEX HI-VIS PULLOVER HOODIE

SYZMIK : ZT484

- Warm, soft 320 gsm low pill fleece.
- Microfiber lined hood for added comfort.
- Heavy duty zips and reflective piping detail.
- Mobile phone chest pocket with zip closure.
- Two pockets to keep your hands warm and store your tools.
- Ribbed elastic cuff and waist to ensure this hoodie doesn't get in the way when you're working.

FABRIC	SIZE
100% Polyester Fleece - 320 gsm	XXS - 5XL, 7XL



## UNISEX STREETWORX REINFORCED KNIT HOODIE

SYZMIK : ZT360

- Warm marle knitted fleece body fabric.
- Contrast softshell panels for reinforcement in high wear areas front hip, underarms, over shoulders and lower tail.
- Thumb holes in the sleeve cuffs are combined with soft-shell reinforcement and soft polyester wadding to provide a built in glove.
- Two side hip zip pockets to store all of your items securely.
- A chest mobile phone pocket with zip closure.

FABRIC	SIZE
Fabric - Knitted Polyester - 340 gsm Constrast - Polyester Soft Shell - 300 gsm	XXS - 5XL, 7XL



## UNISEX HI-VIS ANTARCTIC SOFT-SHELL TAPED JACKET

SYZMIK : ZJ553

- Extremely warm quilted lining.
- Longer length for warmth and protection in cold conditions.
- Zip-off hood.
- Two handwarmer pockets with thick fleece lining.
- Two patch pockets with a flap closure to keep all your items safe.
- One zip chest pocket.

FABRIC	SIZE
100% Oxford Bonded Polyester soft-shell - 330 gsm	XXS - 5XL, 7XL

## MENS HI-VIS 4-IN-1 WATERPROOF JACKET

SYZMIK: ZJ532

- Waterproof and fully seam-sealed.
- Waterproof rating 10,000mm.
- Breathability rating 2,000mm.
- Reversible vest zips into a jacket and can be worn separately or combined.
- Vest with warm fleece lining.
- Innovative reflective panel on the hood to increase visibility from a distance.

FABRIC	SIZE
Fabric - 100% 300D Oxford Polyester Jacket Lining - Polyester mesh jacket lining - 70 gsm Vest lining - Brushed polar fleece - 340 gsm	XXS - 5XL, 7XL





## UNISEX STREETWORX STRETCH WATERPROOF JACKET SYZMIK: ZJ310

- Lightweight waterproof fabric rated to 10,000mm and fully seam-sealed.
- 4 Way stretch fabric that moves with you while you work.
- Breathable fabric rated to 4500g/m<sup>2</sup>/ 24hrs.
- Lightweight mesh lining to maximise breathability.
- Two secure hip pockets with zip closures to keep your items safe.
- One chest pocket with zip closure perfect for storing your mobile phone.

FABRIC	SIZE
100% Polyester High Stretch Yarns - 165 gsm	XXS - 5XL, 7XL



## UNISEX HI-VIS SOFT-SHELL JACKET

SYZMIK : ZJ353

- Breathable.
- Waterproof rating 5,000mm.
- Waterproof zips and reflective piping detail.
- Chin guard for added comfort.
- Reflective tape.
- Front side hip pockets with waterproof zip, so your items stay safe and dry.
- Adjustable cuff fasteners.

FABRIC	SIZE
100% 300D Oxford Bonded Polyester	XXS - 5XL



## UNISEX 2-IN-1 STRETCH SOFT-SHELL TAPED JACKET SYZMIK : ZJ453

- Sleeves zip off to create a vest.
- Stretch fabric to increase comfort and freedom of movement.
- Biomotion segmented tape for increased comfort and movement.
- Zip-off hood.
- 20,000mm Water-resistant rating.
- Unique bonded fleece lining pattern.
- Longer tail to protect you from the elements.
- Cuff adjusters.

FABRIC	SIZE
100% Oxford Bonded Polyester soft-shell - 330 gsm	XXS - 5XL, 7XL



## MENS 1/4 ZIP BRUSHED FLEECE

SYZMIK : ZT366

- Premium heavyweight 320 gsm brushed fleece.
- Soft fleece feel for ultimate comfort on cold days.
- Half-zip construction.
- Two hip pockets with zips so your tools, keys or other valuables never fall out.
- Woven double pen partition pocket on the arm.
- Chin guard for increased comfort.
- COLOURS: Grey Marle, Navy/Charcoal, Black/Charcoal, Charcoal/Black.

FABRIC	SIZE
55% Cotton 45% Polyester - 320 gsm	XXS - 5XL, 7XL



## UNISEX HI-VIS X BACK RAIL JUMPER

SYZMIK : ZT660

- Warm 320 gsm low pill brushed fleece.
- Stretch reflective tape in Bio Motion configuration for added comfort and visibility.
- Two Zip Kangaroo pockets to keep your hands warm and store your tools.
- Ribbed elastic cuff and waist.

FABRIC	SIZE
100% Polyester - 320 gsm	XXS - 5XL, 7XL

# WORKWEAR (WELDERS RANGE)



## PYROMATE® RED WELDERS CAP RUSTY RED

CODE : WC

- All chrome leather
- 200mm nape for neck protection
- Kevlar stitched to increase resistance to heat, cuts and abrasion
- One Size Fits All
- Sold and packaged individually
- Qty/Carton - 20



## PYROMATE® RED WELDERS JACKET

CODE : WJ

- High quality red cow split leather
- Kevlar stitched to increase resistance to heat, cuts and abrasion.
- Staggered double studs to ensure a secure fit.
- Moderate heat protection.
- Sold and packaged individually.
- Qty/Carton - 10.
- Available Sizes - M, L, XL, 2XL, 3XL.



## PYROMATE® WELDERS APRON 90CM X 60CM

CODE : WA96

- Chrome leather.
- Adjustable neck and waist webbed straps with quick release buckles.
- New and improved webbing straps and plastic buckle for easier adjustment.
- Sold and packaged individually.
- Qty/Carton -20.



## PYROMATE® WELDERS APRON 100CM X 80CM

CODE : WA108

- Chrome leather
- Adjustable neck and waist webbed straps with quick release buckles.
- New and improved webbing straps and plastic buckle for easier adjustment.
- Sold and packaged individually.
- Qty/Carton -20.
- Available Sizes - 90cm x 60cm or 100cm x 80cm.



## PYROMATE® WELDERS APRON 100CM X 80CM

CODE : WA108

- Chrome leather with buckle and webbing strap for quick and easy fitting and removal.
- 630mm length gives complete arm protection.
- One Size Fits All.
- Kevlar stitched to increase resistance to heat, cuts and abrasion.
- Sold and packaged individually.
- Qty/Carton - 20.



## PYROMATE® WELDERS LEATHER SPATS LARGE

CODE : WSVL

- Grey chrome leather with velcro fastening for quick and easy fitting and removal
- Protects footwear from welding spatter
- Sizes: L
- Sold and packaged individually
- Qty/Carton - 20



## PYROMATE® WELDERS BLANKET

CODE : WB

- Heavy duty chrome leather for added durability
- Kevlar stitched to increase resistance to heat, cuts and abrasion.
- Metal Eyelets on outer edges for ease of securing.
- Moderate heat protection.
- Sold and packaged individually.

SIZE	QTY/CARTON
1800mm x 1800mm	5
3000mm X 3000mm	2



## PYROMATE® TIGGA TIG WELDERS GLOVE

CODE : TIGW

- Excellent fit and feel for precision welding.
- Durable deerskin provides unmatched dexterity with lighter weight.
- Sewn with Kevlar thread for maximum seam strength.
- 340mm overall length with a 140mm cuff for added forearm protection.
- Available Sizes - L, XL.
- Qty/Pack - 12 Pairs.
- Qty/Carton - 120 Pairs.
- Available Sizes - L & XL.



## PYROMATE® BIG KEV WELDING GLOVE

CODE : TIGWKEV

- Supple goatskin leather - durable and tough.
- Lined with fine gauge Kevlar interlock knit for precise fit.
- Excellent touch sensitivity and dexterity.
- Available Sizes - M, L, XL.
- Qty/Pack - 12 Pairs.
- Qty/Carton - 120 Pairs.
- Available Sizes - M, L & XL.



## PYROMATE® BLUE HEELER® - BLUE & GOLD KEVLAR® LARGE CODE : KBW16E

- High quality blue cow split leather.
- Kevlar stitched to withstand high temperatures for longer periods.
- Lined and welted.
- Reinforced palm and thumb for added durability.
- 406mm (16 inches) long for forearm protection.
- One Size Fits All.
- Qty/Pack - 12 Pairs.
- Qty/Carton - 48 Pairs.

# PERSONAL PROTECTIVE EQUIPMENT (PPE)







# SHOES FITTING GUIDE

## MENS'S EEE FIT

AUS/UK	5	5.5	6	6.5	7	7.5	8	8.5	9	9.5	10	10.5	11	12	13	14	15	16
USA	6	6.5	7	7.5	8	8.5	9	9.5	10	10.5	11	11.5	12	13	14	15	16	17
EUROPEAN	39	39.5	40	40.5	41	41.5	42	42.5	43	43.5	44	44.5	45	46	47	48	49	50

## WOMEN'S - FOR WOMEN'S SPECIFIC STYLES

AUS/USA	5	5.5	6	6.5	7	7.5	8	8.5	9	9.5	10	10.5	11					
UK	3	3.5	4	4.5	5	5.5	6	6.5	7	7.5	8	8.5	9					
EUROPEAN	35	36	37	37.5	38	38.5	39	39.5	40	40.5	41	41.5	43					

The GREY SHADED boxex shows the Men's tp women's equivalent sizes for unisex sized boots and shoes for example a Mens AUS/UK 5 is equivalent to a womens AUS/USA 7.

# PPE (Boots)



## GRIT

## HARD YAKKA : Y60087

- Dual-layer Memory foam / PU footbed.
- PU toe bump.
- Wide profile steel toe cap.
- Nylon (Non-Metallic) Shank.
- PU Outsole, PU Midsole.
- 130° Celsius heat resistant.
- Fuel oil and slip resistance.
- Anti-Static.

MATERIALS	SIZE
Water resistant Leather	6 AU/UK - 13 AU/UK



## UTILITY GUSSET

## HARD YAKKA : Y60165

- Wide profile safety steel toe.
- Dual Layer Memory foam / PU Footbed.
- Additional under foot phylon interlayer.
- Molded PU toe bump.
- Nylon (non-metallic) shank.
- 130° Celsius heat resistant.
- Anti-static protection.
- Fuel oil and slip resistance.

MATERIALS	SIZE
Water resistant Leather	6 AU/UK - 14 AU/UK



## 3056 LACE ZIP BOOT

## HARD YAKKA : Y60203

- Wide Profile Steel toe.
- Neoprene Hoddie - zip hold and Anti-Rub Protection.
- Genuine YKK coil zipper.
- Padded Heel Area.
- Sports Eva Midsole.
- Durable Rubber toe protector.
- Memory foam footbed with Energy Rebound Heel Pods.
- Certified to AS/NZS 2210.3:2009.

MATERIALS	SIZE
Water resistant	6 AU/UK - 13AU/UK



## 3056 LACE ZIP BOOT

## HARD YAKKA : Y60201

- Wide Profile Steel toe.
- Neoprene Hoddie - zip hold and Anti-Rub Protection.
- Genuine YKK coil zipper.
- Padded Heel Area.
- Sports Eva Midsole.
- Durable Rubber toe protector.
- Memory foam footbed with Energy Rebound Heel Pods.
- Certified to AS/NZS 2210.3:2009.

MATERIALS	SIZE
Water resistant	6 AU/UK - 13 AU/UK



## 3056 LACE ZIP BOOT

## HARD YAKKA : Y60204

- Wide Profile Steel toe.
- Neoprene Hoddie - zip hold and Anti-Rub Protection.
- Genuine YKK coil zipper.
- Padded Heel Area.
- Sports Eva Midsole.
- Durable Rubber toe protector.
- Memory foam footbed with Energy Rebound Heel Pods.
- Certified to AS/NZS 2210.3:2009.

MATERIALS	SIZE
Water resistant	6 AU/UK - 13 AU/UK

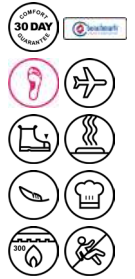


## GRAVEL

**HARD YAKKA : Y60085**

- Dual Layer Memory foam / PU footbed.
- PU toe bump.
- Padded Collar.
- Wide profile steel toe cap.
- Nylon (Non-Metallic) Shank.
- PU Outsole, PU Midsole.
- 130° Celsius heat resistant.
- Fuel oil and slip resistance.
- Anti-static.

MATERIALS	SIZE
Water resistant Leather	7 AU/UK - 13 AU/UK



## COMPTREC G3 WOMEN'S SPORT SAFETY

**KINGGEE : K26600**

- Lightweight Composite Safety Cap.
- EVA midsole for sports comfort.
- 300° Heat Resistant rubber Outsole.
- Rubber toe protector.
- Specific women's fit.
- Removable Sports Gel Footbed.
- SRC superior slip-resistant rated outsole.
- Podiatry Endorsed.
- Reflective heel piece.

MATERIALS	SIZE
Breathable Mesh	5 AU/UK - 10 AU/US



## COMPTREC G41 SPORT SAFETY

**KINGGEE : K26460**

- Light weight Composite Safety Cap.
- Anti-static.
- 3 layered comfort midsole/outsole for extreme COMFORT.
- 300° Heat Resistant rubber Outsole.
- PU toe protector.
- Removable memory foam footbed with Energy Rebound Heel Pods.
- Certified to AS/NZS 2210.3:2009.

MATERIALS	SIZE
Vegan friendly PU and Mesh Upper	6 AU/UK - 15 AU/UK



## COMPTREC G40 SPORT SAFETY

**KINGGEE : K26455**

- Light weight Composite Safety Cap.
- Anti-static.
- 3 layered comfort midsole/outsole for extreme COMFORT.
- 300° Heat Resistant rubber Outsole.
- PU toe protector.
- Removable memory foam footbed with Energy Rebound Heel Pods.
- Certified to AS/NZS 2210.3:2009.

MATERIALS	SIZE
Vegan friendly PU and Mesh Upper	6 AU/UK - 15 AU/UK



## TRADIE BOOT

**KINGGEE : K27150**

- Wide profile steel toe cap.
- 10 Gauge YKK Coil Zip.
- ARZ+ Pad Technology.
- TPU toe bump.
- TPU outsole, PU midsole.
- Dual Layer Memory foam / PU footbed.
- Dri-Lex lining with Aegis anti-microbial.
- 130° Celsius heat resistant.
- Anti-Static.
- Certified to AS/NZS 2210.3:2009.

MATERIALS	SIZE
Water Resistant Leather and Breathable nylon upper	6 AU/UK - 14 AU/UK



# PPE (Boots/Socks)



## TRADIE BOOT

KINGGEE : K27100

- We use Global Recycled Standard (GRS) endorsed recycled TPU materials. When you shop from this range, you're helping us work towards a more sustainable future.
- Great boot. Lots of padding and very comfortable even on long days.

MATERIALS	SIZE
Water Resistant Leather and Breathable nylon upper	6 AU/UK - 14 AU/UK



## PROCOOL

KINGGEE : K27185

- Water repellent mesh.
- Bi-functional neoprene all-weather safeguard.
- Padded Neoprene impact ankle protection.
- Reflective mudguard.
- Memory foam footbed.
- 8-Gauge YKK® Coil Zip.
- Rubber toe bumper and heel bumper.
- Certified to AS/NZS 2210.3:2009.

MATERIALS	SIZE
Water repellent mesh and neoprene upper	6 AU/UK - 13 AU/UK



## 3056 LACE ZIP BOOT

HARD YAKKA : Y60204

- Wide Profile Steel toe.
- Neoprene Hoddie - zip hold and Anti-Rub Protection.
- Genuine YKK coil zipper.
- Padded Heel Area.
- Sports Eva Midsole.
- Durable Rubber toe protector.
- Memory foam footbed with Energy Rebound Heel Pods.
- Certified to AS/NZS 2210.3:2009.

MATERIALS	SIZE
Water resistant	6 AU/UK - 13 AU/UK



## GRIP 3000

KINGGEE : K26540

- Wide profile safety steel toe.
- Canvas upper.
- SRC rated for max slip resistant.
- Padded collar.
- Memory foam footbed.
- Rubber toe bump.
- Certified to AS/NZS 2210.3:2009.

MATERIALS	SIZE
Canvas upper	4 AU/UK - 13 AU/UK





## MEN'S BAMBOO WORK SOCK

KINGGEE : K09270

- Athletic design.
- Padded footbed.
- Seam-free toe.

MATERIALS	SIZE
80% Bamboo Viscose/ 17% Nylon / 3% Elastane	6-10, 11-14



## HI-VIS WOOLEN SOCKS - 3 PAIR PACK

DNC : S103

- Premium Quality.
- 100% Australian Made.
- Absolute comfort.
- Colour : Orange, Yellow.

FABRIC	SIZE
75% Wool, 25% Nylon	2-5, 6-11, 12+



## WOOLEN SOCKS - 3 PAIR PACK

DNC : S104

- Premium Quality.
- 100% Australian Made.
- Absolute comfort.
- Colour : Black, Navy.

FABRIC	SIZE
75% Wool, 25% Nylon	2-5, 6-11, 12+



## HI-VIS 2 TONE WOOLEN SOCKS - 3 PAIR PACK

DNC : S105

- Premium Quality.
- 100% Australian Made.
- Absolute comfort.
- Colour : Orange/Navy, Yellow/Navy.

FABRIC	SIZE
75% Wool, 25% Nylon	2-5, 6-11, 12+

# PPE (Socks)



## EXTRA THICK BAMBOO SOCKS

DNC : S108

- Premium Quality.
- Individual Pack with Plastic hook for display.
- 100% Eco-friendly organic fiber, super soft & comfortable.
- The Naturally anti-bacterial bamboo fibers keep foot odour to a minimum.
- Superior wicking & breathable fabric keeps your feet dry & cool.
- Anti-static natural fiber.

MATERIALS	SIZE
92% Bamboo, 8% Elastine	2-5 = Women's 4-7 6-11 = Women's 8-11 12+ = Women's 12+



## EXTRA THICK HI-VIS 2 TONE BAMBOO SOCKS

DNC : S109

- Premium Quality.
- Individual Pack with Plastic hook for display.
- 100% Eco-friendly organic fiber, super soft & comfortable.
- The Naturally anti-bacterial bamboo fibers keep foot odour to a minimum.
- Superior wicking & breathable fabric keeps your feet dry & cool.
- Anti-static natural fiber.

MATERIALS	SIZE
92% Bamboo, 8% Elastine	2-5 = Women's 4-7 6-11 = Women's 8-11 12+ = Women's 12+



## COTTON SOCKS - 3 PAIR PACK

DNC : S111

- Premium quality.
- 100% Australian made.
- Absolute comfort.
- No itching, no marking.
- No irritating.
- The spandex featuring loose elastic to help you blood flow to you feet.

FABRIC	SIZE
95% Cotton, 5% Spandex	2-5, 6-11, 12+



## ACRYLIC 3 PACK SOCKS

DNC : S122

- Full Terry Crew Socks.
- Absolute comfort for both work or casual.
- Colour : Black, Navy.

FABRIC	SIZE
80% Acrylic, 20% Polyester	2-5, 6-11, 12+



## HI-VIS TWO TONE ACRYLIC 3 PACK WORK SOCKS

DNC: S123

- Full Terry Crew Socks.
- Absolute comfort.
- 3 pair super pack.

MATERIALS	SIZE
80% Acrylic, 20% Polyester	2 - 5, 6 - 11, 12+



## COTTON RICH 3 PACK SOCKS

DNC: S125

- Full Terry Crew Socks.
- Absolute comfort for both work or casual socks.
- 3 pair super pack.

MATERIALS	SIZE
80% Cotton, 17% Polyester, 3% Elastane	2 - 5, 6 - 11, 12+



## MENS COOLMAX SOCKS 3 PACK

KINGGEE: K19012

- Coolmax® All Season comfort technology.
- Arch support.
- Cushioned footbed.
- Reinforced heel and toe.

MATERIALS	SIZE
62% Coolmax, Polyester, 35% Cotton, 3% Elastane	AU/UK 7-12



## MENS ECO CREW SOCK 3 PACK

KINGGEE: K09008

MATERIALS	SIZE
Outer layer: 100% recycled polyester Inner layer: 16% polyester / 4% elastane	AU/UK 7-12



## MENS THERMAL SOCKS 2 PACK

KINGGEE: K09007

- Brushed Fleece internal.
- Extra cushioning.

MATERIALS	SIZE
93% Acrylic, 6% Polyester, 1% Elastane	AU/UK 7-12

# PPE (Glasses/Gloves)



## TRANSFORMER SAFETY SPEC

DNC : SGTS01

- "3 in 1" Goggle/Spec Combo. Medium impact Protection & 99.9% UV Protection.
- Super Anti-scratch & Anti-fog on both side of lenses, 2.2mm Anti-scratch & Anti-fog Polycarbonate Dual pane outer lens design. Provides total UV400 protection against harmful UV-A and UV-B rays. Both temples come with a 5-point adjustable ratchet system to fit any face shape industrial nylon grade material for softness and all-day comfort.

COLOUR	USE
Clear +AF, Smoke +AF	Sun Protection



## UNIVERSE SAFETY SPEC

DNC : SGUS01

- Ultra Lightweight & Contemporary design for the most comfortable fit.
- Medium impact Protection & 99.9% UV Protection.
- All Polycarbonate Lenses are with Anti-Scratch coating on both sides.
- Extended curved design lens for extra protection against airborne particles.

COLOUR	USE
Clear, Smoke	Sun Protection



## TRACKSIDE SAFETY GLASSES - BLACK FRAME POLARISED LENS

ASW : SGTB01

- 719 Trackside safety glasses is a Jack Armour design of safety glasses.
- It is certified to AS/NZS1337.1 as a medium impact polarised safety glasses.
- The co-injected temples provides you a new level of comfort when wearing safety eyewear.
- The 719 Trackside comes with adjustable nose pads which is a great feature.

LENS MATERIALS	LENS TINT
Polycarbonate	Smoke



## COBRA SAFETY GLASSES - NEON ORANGE ARMS SMOKE LENS

ASW : SGC001

- Cobra Safety Glasses are now available with hi-vis temples.
- The glasses are certified to AS/NZS 1337.1 with medium impact protection.

LENS MATERIALS	LENS TINT
Polycarbonate	Smoke



## FRONTLINE SAFETY GOGGLES - CLEAR ANTI-FOG LENS

ASW : SGAF01

- Heat Resistant.
- Fire Protection.
- Hot Solids and Molten Metal Resistance.
- Splash Resistance.
- Anti-fog.
- Adjustable Length Strap.
- Elasticised Strap.
- Wide and Clear Visibility.
- Medium Impact.

LENS MATERIALS	LENS TINT
Polycarbonate	Clear





## MARKSMAN GLOVES

ASW : GLMMO1

- The Marksman professional glove is a high-performance Mechanics Glove.
- Designed with synthetic leather, the Marksman will outlast the life of the traditional riggers' gloves.
- It comes with a knuckle bar padding for additional protection.
- The palm side features soft padding at the critical intermediate and proximal phalanges.

MATERIALS	SIZE
Fabric, Synthetic Leather Palm	Large



## ORANGE NITRILE DIP

DNC : GLONO1

- 100% Cotton jersey with knitted wrist for hygiene and comfort. Lightweight orange nitrile 3/4 coating. Good abrasion resistance and grip in dry, wet and oily conditions/ Comply with EN388-4121.
- Suitable for general purpose wear for assembly, general maintenance and warehousing, Foundry/fabrication. Waste management, chemical handling.

COLOUR	SIZE
Orange/Nature	S/7 M/8 L/9 XL/10 2XL/11



## T-REX

DNC : GLTRO1

- Spandex foam backed with a Neoprene knuckle panel provides increased flexibility. Premium durable synthetic leather palm, reinforced foam padded inner palm for Anti-Vibration. Reinforced patch on thumb & finger tips for added durability & protection, elastic cuff with adjustable rubber/velcro for the perfect fit. Comply with EN388-3131.
- Suitable for general purpose handling, construction/mining, hand and power tools, carpentry, machinists/mechanics.

COLOUR	SIZE
Black/Orange/Yellow	M/8 L/9 XL/10 2XL/11



## MAX 5 GLOVES

ASW : GLMF01

- Cut Level 5.
- Touchscreen capable.
- PU coating on the palm.
- Knitted wrist.
- Easy wearing.
- Good for wet or dry conditions.
- Suits all work environments.

GLOVES TYPE	SIZE
Abrasion Resistant, Cut Resistant, Mechanic	S - 2XL

## ULTIMATE GLOVES

ASW : GLUG01

- Cut 5.
- High abrasion rating.
- NBR coating.
- Great grip in oily environments.
- Breathable yarn.
- Washable.

MATERIALS	SIZE
NBR Palm, Nylon	M - 2XL



# PPE (Mask And More)



## PREMIUM COW GRAIN RIGGER

**DNC : GLPC01**

- Premium quality natural cow grain leather. Wing thumb, stitch-free palm for increased durability, colour coded cuff for size identification. Comply with EN388-3132.
- Suitable for general purpose handling, mining, steel fabrication, automotive, construction, engineering, shipping, smelters and foundries.

COLOUR	SIZE
Nature	S/8 M/9 L/10 XL/11 2XL/12



## N95 DUST MASK

**ASW : FMDN95**

- N95 Masks.
- NIOSH Approved.
- Meets the requirements of 42 CFR 84.
- Tested with 0.3 microns with Sodium Chloride.
- Low initial filter resistance.

COMPLIANCE LIST	INNER QUANTITY
NIOSH	20



## P1 DUST MASK

**ASW : FMDDP1**

- Certified as P1.
- AS/NZS 1716 certified.
- Polypropylene outer layer.
- Latex-free synthetic rubber head strap.
- Contour design that reduces fogging on glasses and goggles.
- Soft closed-cell nose foam.
- Adjustable nosepiece.

CERTIFICATIONS LIST	STANDARDS BLOCK
AS/NZS 1716	standards-dustmasks



## P2 DUST MASK

**ASW : FMDDP2**

- Certified as P2.
- AS/NZS 1716 certified.
- Polypropylene outer layer.
- Latex-free synthetic rubber head strap.
- Contour design that reduces fogging on glasses and goggles.
- Soft closed-cell nose foam.
- Adjustable nosepiece.

CERTIFICATIONS LIST	STANDARDS BLOCK
AS/NZS 1716	standards-dustmasks



## 3-PLY FACE MASKS (LEVEL 2)

**ASW : FMTP2**

- Complies with AS/NZS 4381-2015 Level 2.
- 3 layer medical masks with elastic earloops and concealed wire nose bridge.
- These masks are ideal for procedures where moderate to light amounts of fluid, spray and/or aerosols are produced.
- TGA registered Class 1 medical device.

RATING	QTY PER BOX
Level 2	50 PCS



## 5 PACK REUSABLE FACE MASKS

NNT : FMBR5

- Triple-layered mask with a breathable cotton inner layer.
- Soft elastic ear loops for comfort and adjustable toggle to get the best fit.
- Unisex design for adults.
- Machine washable and reusable.

MATERIAL	SIZE
Polyester	One size fits most



## TORQUE EARMUFFS

ASW : EMT01

- Comfortable wearing with head padding and soft cushions.
- Perfect for very noisy environments.
- SLC80 Rating of 28dB.
- Class 5 Rating.
- Certified to AS/NZS 1270.

COLOUR	SIZES
Pink, Yellow	Standard



## PROBELL DISPOSABLE CORDED EARPLUGS CORDED

CODE : EPYC

- Class 5, SLC80, 27dB
- Hearing protection for noise levels to 110dB(A).
- ProPlug Bell shape delivers maximum comfort.
- Brightly coloured offering high visibility for worker compliance.
- Superior design makes it easier to insert and reduces tendency to back out of the ear.
- Pairs packaged in individual poly bags.
- Cord allows earplugs to hang around neck when not in use.
- Qty/Box - 100 Corded pairs.
- Qty/Carton - 10 boxes.



## PROBELL DISPOSABLE CORDED EARPLUGS CORDED

CODE : EPOC

- Class 5, SLC80, 27dB.
- Disposable, PU foam.
- Hearing protection for noise levels to 110 dB(A).
- Pairs packaged in individual poly bags.
- Cord allows earplugs to hang around neck when not in use.
- Qty/Box - 100 corded pairs.
- Qty/Carton - 10 boxes.



## PROBULLET REFILL BAG FOR DISPENSER UNCORDERD

CODE : EPDS500R

- Class 5, SLC80, 27dB.
- Disposable, PU foam.
- Hearing protection for noise levels to 110 dB(A).
- Bulk 500 pair refill pack for EPDS500A Dispenser.
- Qty/Pack - 500 uncorderd pairs.
- Qty/Carton - 10 packs.

# PPE AND MORE



## EARPLUG DISPENSER STATION DISPENSER ONLY CODE : EPDS500A

- Workplace dispenser holds 500 pairs of ProBullet or ProBell Disposable Uncorded Earplugs
- Dispenses one pair at a time
- Comes with screws for optional wall mounting
- Sold Individually
- Qty/Carton -5
- Earplugs sold separately (EPDS500R or EPYU500R)



## PROBLOC SPF 50+ ZINC STICK CODE : ZS12-50

- Complies to AS/NZS 2604:2012 Sunscreen Products
- SPF 50 + provides ultra-broad-spectrum protection from the sun's harsh UVA and UVB rays.
- Ultra-broad-spectrum protection from the sun's harsh UVA and UVB rays.
- 4 hours water resistant. Perfect for worksite use as well as weekend and recreational activities.
- Contain Vitamin E and Aloe Vera to moisturise and condition the skin.
- Featuring dry touch technology for a light natural skin feel.
- Skin friendly dermatologically tested formula
- Developed and manufactured in Australia
- Qty / Carton 120 pieces
- Qty / Pack 12 pieces



## PROBLOC SPF 50 + SUNSCREEN 60ML SQUEEZE BOTTLE WITH CARABINER CODE : ZS12-50

- Complies to AS/NZS 2604:2012 Sunscreen Products
- SPF 50 + provides ultra-broad-spectrum protection from the sun's harsh UVA and UVB rays.
- Ultra-broad-spectrum protection from the sun's harsh UVA and UVB rays.
- 4 hours water resistant. Perfect for worksite use as well as weekend and recreational activities.
- Contain Vitamin E and Aloe Vera to moisturise and condition the skin.
- Featuring dry touch technology for a light natural skin feel.
- Skin friendly dermatologically tested formula.
- Developed and manufactured in Australia.
- Qty / Carton 120 pieces.
- Qty / Pack 12 pieces.



## PROBLOC SPF 50 + SUNSCREEN 125ML SQUEEZE BOTTLE CODE : SS125-50

- Complies to AS/NZS 2604:2012 Sunscreen Products - Evaluation and Classification.
- SPF 50 + provides ultra-broad-spectrum protection from the sun's harsh UVA and UVB rays.
- 4 hours water resistant. Perfect for worksite use as well as weekend and recreational activities.
- Contain Vitamin E and Aloe Vera to moisturise and condition the skin.
- Featuring dry touch technology for a light natural skin feel.
- Skin friendly dermatologically tested formula.
- Developed and manufactured in Australia.
- Qty / Carton 60 pieces.
- Qty / Pack 12 pieces.





## PROBLOC SPF 50 + SUNSCREEN 250ML SQUEEZE BOTTLE CODE : SS250-50

- Complies to AS/NZS 2604:2012 Sunscreen Products - Evaluation and Classification.
- SPF 50 + provides ultra-broad-spectrum protection from the sun's harsh UVA and UVB rays.
- 4 hours water resistant. Perfect for worksite use as well as weekend and recreational activities.
- Contain Vitamin E and Aloe Vera to moisturise and condition the skin.
- Featuring dry touch technology for a light natural skin feel.
- Skin friendly dermatologically tested formula.
- Developed and manufactured in Australia.
- Qty / Carton 24 pieces.
- Qty / Pack 6 pieces.



## TURTLE BACK KNEE PADS HARD SHELL CODE : KPHS

- Turtle Back hard shell for easy swivelling and durability
- Gel padding back and sides enhances comfort and assists in even weight distribution
- Double neoprene straps provide secure, comfort fit
- Clip on buckle for easy on/off and easy adjustment
- Sold and packaged individually
- Qty/Carton - 20



## PROCOMFORT KNEE PADS LEATHER SHELL CODE : KPLS

- Non-slip, non-marking soft synthetic leather shell.
- Soft shell flexes with knee.
- Suitable for use on all interior floors.
- Gel padding back and sides enhances comfort and assists in even weight distribution.
- Double neoprene straps provide secure, comfortable fit.
- Clip on buckle for easy on/off and easy adjustment.
- Sold and packaged individually.
- Qty/Carton - 20.



## SMART ICE

- Use in cooler bags, boxes and all forms of transport requiring temperature control.
- Environmentally sound way of keeping perishables and drinks cool and dry.
- Avoids pooling of water associated with normal ice
- Large sheet size of 450 x 300mm, comprising 24 square 75mm cells.
- Durable and can be cut to the size required prior to hydration
- Stays frozen longer than the same volume of ice and keep your cooler contents dry and intact.
- Easy to use.
- Soak it in water for a couple of hours.
- Freeze.
- Reusable.

# PPE (Hard Hat)



## INDUSTRIAL HARD HAT

ASW : HHH01

- The HammerHead comes with 12 ventilation holes, allowing for increased airflow through the shell.
- It is built with a 6-point nylon harness.
- It comes with alignment comfort pads for extra load share and protection.

COLOURS	TYPE
Black, Blue, Green, Yellow, Grey, Orange, Pink, Purple, White.	Industrial Helmet



## HAMMERHEAD HARD HAT

ASW : HHH01

- The HammerHead comes with 12 ventilation holes.
- Allowing for increased airflow through the shell.
- It comes with alignment comfort pads for extra load share and protection.
- All helmets come pre-assembled with a 6 point harness for equalised weight distribution. The Pin Lock harness can be changed to the optional ratchet/push turn locking harness.
- All hard hats come with the 30mm slot to fit all major brands of cap attached earmuffs.
- A full range of colours is readily available, including the neon colours and hot pink.



## TORRENT HARD HAT ATTACHMENT

ASW: LA002

- The Torrent torch can easily be operated hands free with this attachment.
- It incorporates a swivel rotation action with the ball knuckle, allowing you directional control of the torch.



## SUN BRIM WITH NECK FLAP (FOLDAWAY)

ASW : HHSB01

- The compact fold-up brim allows for ease of storage.
- It comes with hook and loop fasteners, allowing you to secure the sun brim through the earmuff slots on most hard hats.
- The easy to assemble slips on the front and back of the brims makes it quick and easy to install on most hard hats.
- The one-piece lightweight neck shape covers your entire neck from ear to ear.

COLOURS	TYPE
Blue	Hard Hat



## DETACHABLE HARD HAT BRIM WITH FLAP

DNC : HHDF01

- Suits PHHV Hard Hat.
- One size fits all. 12/Carton.
- Lightweight.

COLOURS	TYPE
Fluoro Orange, Fluoro Yellow, Green, Navy, White	Hard Hat



## HAMMERHEAD HARD HAT VENTED (DEPUTY FIRE WARDEN) ASW: HHFV01

- The HammerHead comes with 12 ventilation holes, allowing for increased airflow through the shell. It is built with a 6-point nylon harness. It comes with alignment comfort pads for extra load share and protection.
- Print: FIRST AID OFFICER.

COLOURS	TYPE
Orange	Hard Hat



## HAMMERHEAD HARD HAT VENTED (FIRST AID OFFICER) - GREEN ASW: HHGV01

- The HammerHead comes with 12 ventilation holes, allowing for increased airflow through the shell. It is built with a 6-point nylon harness. It comes with alignment comfort pads for extra load share and protection.
- Print: DEPUTY FIRE WARDEN.

COLOURS	TYPE
Green	Hard Hat



## HAMMERHEAD HARD HAT VENTED (PRE-PRINTED) ASW: HHPV01

- The HammerHead comes with 12 ventilation holes, allowing for increased airflow through the shell. It is built with a 6-point nylon harness. It comes with alignment comfort pads for extra load share and protection.
- Pre-Printed.

COLOURS	TYPE
White	Hard Hat



# FIRST AID KIT SERVICES

Arrow Work and Safety Gear's main goal is to help our clients stay safe. Therefore, one of our most fundamental products is our range of First Aid Kits. In addition to supplying our clients with First Aid Kits, we can also arrange for regular servicing to be carried out. Therefore, you won't have to worry about not having the correct resources for emergencies.

We currently source and supply a standard workplace kit in a metal case and portable bag. These kits are perfect for smaller workplaces with approximately 1 to 25 staff members. We also have the auto kit in the PVC case to guarantee that your staff are covered even while travelling. This case is the perfect option for vehicles due to its size and contents. To make sure our clients are covered, we also carry the SURVIVAL Workplace First Aid Kit. This kit has been created by leading first aid experts. Therefore, it has everything your staff will need in case of an emergency.

New to our first aid kit product and service line is the modular options. Available in a modular cabinet and modular portable bag, these kits make it easy to identify what resources you require in different situations.



## **FIRST AID KIT - STANDARD WORKPLACE. MEDIUM 1-25 PEOPLE. METAL CASE**

**CODE: FAWM01**

- Description: Standard Workplace First Aid Kit Medium (1-25 People) in Metal Case. Meets the prescribed regulations of NSW, S.A, N.T, A.C.T , TAS.
- General Description: Compliant and comprehensive Workplace First Aid Kit that contains all the necessary items to address common workplace injuries. Meets the prescribed regulations or Codes of Practice of different states (NSW, S.A, N.T, A.C.T , TAS). Ideal for 1-25 employees in a workplace.





### FIRST AID KIT -MODULAR CABINET

CODE: FAMC01

- If your First Aid Kit has run out of items or if they have expired, it's not just a hassle for you, it is a constant risk for your employees and visitors.
- A managed service with Star Hygiene takes the hassle out of maintaining and restocking your workplace First Aid kits.
- Our timely scheduled programmed service ensures your First Aid kits are checked and restocked at regular intervals.
- This ensures that your workplace maintains compliance with WH&S legislation and is ready for any possible risks/injuries should they arise.



### FIRST AID KIT -MODULAR PORTABLE BAG (QUARTERLY SERVICE)

CODE: FAMPO1

- If your First Aid Kit has run out of items or if they have expired, it's not just a hassle for you, it is a constant risk for your employees and visitors.
- A managed service with Star Hygiene takes the hassle out of maintaining and restocking your workplace First Aid kits.
- Our timely scheduled programmed service ensures your First Aid kits are checked and restocked at regular intervals.
- This ensures that your workplace maintains compliance with WH&S legislation and is ready for any possible risks/injuries should they arise.



### SURVIVAL WORKPLACE FIRST AID KIT

CODE: FASWO1

- Tick off every item on your workplace first aid kit checklist with the SURVIVAL Workplace First Aid KIT. Containing all the components you need to be workplace compliant, this KIT will have you covered for any workplace emergency.
- Nationally compliant with Safe Work Australia's Workplace Health and Safety Code of Practice.
- Make sure your workplace makes the right choice.
- Height: 27cm | Width (Closed): 12cm | Length (Closed): 21cm | Length (Open): 79cm | Weight: 1.6kg.
- Designed in Australia by leading first aid experts, the colour-coded labelling system enables you to clearly identify first aid contents and explain each item's typical use. This makes it quicker and easier to respond to any emergency.



### FIRST AID KIT -STANDARD WORKPLACE KIT (1-25 PEOPLE) IN PORTABLE BAG

CODE: FAPB01

- Description: Standard Workplace First Aid Kit Medium (1-25 People) in Portable Bag. Used for additional modules. Meets the prescribed regulation of NSW, S.A, N.T, A.C.T , TAS.
- General Description: Ideal for placing additional modules. Compliant and comprehensive Workplace First Aid Kit that contains all the necessary items to address common workplace injuries. Meets the prescribed regulations or Codes of Practice of different states (NSW, S.A, N.T, A.C.T , TAS).
- Suitable for 1-25 employees in a workplace.



### FIRST AID KIT - AUTO. COMPLETE KIT IN PVC CASE

CODE: FAPC01

- Description: First Aid Kit - Auto.
- General Description: A portable Kit for Work Vehicle and People on the Move.
- Compact Kit that fits behind the seat or in the boot. In PVC case.
- Complies with WH&S Regulations (NSW).



# TACTILES STAIR NOSING ENTRANCE MATS

Arrow Work and Safety Gear stocks a range of equipment for your flooring to keep pedestrians safe and for other functional purposes.

Tactiles help the visually impaired move around. They use sensory information to help pedestrians move around dangerous situations such as pedestrian crossings and stairs. We stock a range of tactiles and mats, including high visibility yellow. Our mats come in high-quality rubber to prevent slipping and accidents. The mats are UV stabilised so they can be installed indoors or outdoors. All our individual tactiles are slip-resistant and have the required luminance contrast.

Arrow Work and Safety can also source stair nosing. You can have stair nosing installed in a simple black colour or a high visibility yellow. Therefore, creating awareness for pedestrians and ensuring they stay safe.

Our floor mats can keep your workplace safe or display your logo and branding. We have rubber, entrance, wet area, and special purpose mats. Our mats are perfect for any premise including offices, workshops, supermarkets, stables, and desks.

Some of our floor mats include the new and innovative MicroShield Foot Bath, which disinfects any shoes that step onto them. We also have the standing desk mat for those who work long hours at a desk.

Our team also takes orders for customised floor mats. We can have any colour, shape or text printed. We can also have mats cut to customised sizes in your choice of material.





# TACTILES



## 316 STAINLESS STEEL INTEGRATED TACTILE PLATE CODE : TCPS01

- Just take a look at these! The Stainless Steel Tactile Plates give a distinguished and uniform look without all the extra work of single stud applications. Ready to take on the hardest of traffic areas and manufactured from 316 Marine Grade Stainless Steel, these tactiles will keep their good looks even at beachside locations. Add an upmarket look today and wait for the whistles!
- Colour :** Silver Plate.

MATERIAL	SIZE
316 Marine Grade Stainless Steel	300mm x 300mm



## YELLOW AND BLACK TACTILES MATS CODE : TCMYB01

- Tactile paving assists pedestrians who are visually impaired to safely move around built environments through a system of textured ground surface indicators that provide sensory information. Warning indicators are installed in hazardous locations such as the top of stairs and pedestrian crossings, in order to provide advance warning of oncoming hazards. Directional indicators are installed on the ground in the continuous accessible path of travel to give warning and provide directional information.

MODEL	HEIGHT	WIDTH	DEPTH	WEIGHT
Tactile Mat	300mm	300mm	20mm-40mm	250 gm – 450gm



## 316 STAINLESS STEEL INTEGRATED TACTILE PLATE W/ BLACK CARBORUNDUM INSERT CODE: TCPB01

- The most stylish tactile in our range. The Classic Tactile Stainless Steel plate not only looks great, but it is also hard wearing and designed to last. Manufactured from polished 316 Marine Grade Stainless Steel, these tactile plates are easy to install with just four fixing points per 300 x 300 tile.
- Colour:** Silver Plate w/ Black Insert.

MATERIAL	SIZE
316 Marine Grade Stainless Steel w/ Carborundum Insert	300mm x 300mm



## TACTILE INDICATOR SINGLE STUDS - TGS1 STAINLESS STEEL WITH YELLOW CARBORUNDUM INSERT CODE: TCSY01

- The Safety Xpress TGS1 hazard warning stainless steel single stud tactile is suitable for indoors and outdoors, commercial car parks, footpaths, shopping centres etc in areas to warn the visually impaired of such warnings as:
- Life-threatening hazards where serious falls may occur, such as at railway platforms, wharves, vehicular driveways and exits from car parks, etc., which intersect access paths.
- At the top and bottom of stairways and ramps.

MATERIAL	SIZE
316 Marine Grade Stainless Steel w/ Carborundum Insert	Shaft Length:18mm Diameter:35mm Height: 5mm

## BLACK STAINLESS STEEL STUDS CODE: TCSB01

- The Safety Xpress TGS1 hazard warning stainless steel single stud tactile is suitable for indoors and outdoors, commercial car parks, footpaths, shopping centres etc in areas to warn the visually impaired of such warnings as:
- Life-threatening hazards where serious falls may occur, such as at railway platforms, wharves, vehicular driveways and exits from car parks, etc., which intersect access paths.

MATERIAL	SIZE
316 Marine Grade Black Stainless Steel	Shaft Length:14mm Diameter:35mm Height: 5mm





**SOLID BLACK PVD TACTILE INDICATOR WITH A 18MM X 8MM SELF-LOCKING STEM**  
**CODE: TCISO1**

- Black PVD Tactile indicator with 12mm stem.
- Produced by CNC machine with milling finish.
- Tactile head will not separate from its anchor.
- 8-Year warranty against rust & corrosion only.
- Dimensions: Outer Diameter 35mm x top diameter 25mm x Height 4.5mm.
- Stem: 12mm x 6mm Diameter.
- Slip Rating: P5 (test report available on request).
- Type: Warning tactile.
- Material: Solid 316 Stainless Steel with Black PVD Coating.



**SOLID 316 STAINLESS STEEL TACTILE WITH A 18MM X 8MM SELF-LOCKING STEM**  
**CODE: TCSSO1**

- Concentric ring on face with 12mm stem. All of our quality 316 Stainless Steel Tactiles are factory polished & come with a 10-year warranty.
- Type: Warning tactile.
- Material: Solid 316 Stainless Steel.
- Dimensions: Outer Diameter 35mm x top diameter 25mm x Height 4.5mm.
- Stem: 18mm x 8mm Diameter (plastic plug).
- Slip Rating: P5 (test report available on request).
- Produced by CNC machine with milling finish.
- Tactile head will not separate from its anchor.
- 10-Year warranty against rust & corrosion only.



**SOLID 316 STAINLESS STEEL TACTILE. CARBORUNDUM INFILL WITH A 18MM X 8MM SELF-LOCKING STEM**  
**CODE : TCSC01**

- Solid Carborundum in-filled 316 Stainless Steel.
- Tactile indicator with stem Concentric ring on face with 12mm stem. Black or yellow infill.
- Code: T06 Black or T06Yellow.
- Type: Warning tactile.
- Material: Solid 316 Stainless Steel with Black or Yellow Carborundum Insert.
- Dimensions: Outer Diameter 35mm x top diameter 25mm x Height 4.5mm.
- Stem: 12mm x 6mm Diameter.
- Slip Rating: P5 (test report available on request).
- Produced by CNC machine with milling finish.
- Tactile head will not separate from its anchor.
- 8-Year warranty against rust & corrosion only.

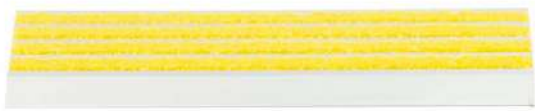


**PLASTIC TACTILE STUD WITH STEM**  
**CODE: TCSP01**

- Code: T09.
- Type: Warning tactile.
- Material: PVC Polyurethane Blend.
- Density : 1390 Kg/m<sup>3</sup>.
- Heat Transfer Coefficient: 0.16W/(m.K).
- Melting Point: 250°C Effective Head of Combustion: 17.95 MJ/KG.
- Tensile Strength: 50-80MPa.
- Elongation at break: 20-40%.
- Notch Test: 2-5 Kj/m<sup>2</sup>.
- Young's Modulus: 2900-3300 Mpa.
- Dimensions: Outer Diameter 35mm x top diameter 25mm x Height 4.5mm.
- Stem: 19mm x 8mm Diameter.
- Slip Rating: P5(test report available on request).



# STAIR NOSING AND ENTRANCE MATS



## FRANKLIN ALUMINIUM YELLOW

CODE: SNAY01

- Floorsafe Australia's Franklin range of carborundum stair nosing's have been designed & manufactured to be used in extremely high traffic areas.
- Material: Anodised aluminium 980gr/metre.
- Size: 10mm x 74mm x 5mm Thickness.
- Available in 3620mm lengths or custom cut to required size
- Drilled and screwed through one of the carborundum strips or fixed with a suitable adhesive to most substrates.
- Manufactured from a quality 5mm anodised aluminium this tough & durable stair nosing with a choice of black or yellow 4 x 10mm carborundum anti-slip strips is ideal to be installed on both internal and external steps & stairways to provide the utmost in safety.



## ANODISED ALUMINIUM-CARBONRUNDUM STEP INLAY CODE: SNAI01

- Floorsafe Australia's RC20 Franklin anodised aluminium-carborundum step inlay 50mm x 5mm is available in three versions. A clear anodised aluminium with a choice of black or yellow inserts. All black anodised aluminium with black inserts.
- This quality manufactured product has been designed & manufactured to be installed into internal & external rebated steps where safety and appearance is of utmost importance. The features of this product is that it looks attractive, is extremely hard-wearing and is a great choice when it comes to providing the utmost safety on steps inside or outside.

SIZE	LENGTH
5mm x 50mm	3600mm



## ANODISED ALUMINIUM-CARBONRUNDUM STEP INLAY YELLOW CODE: SNAC01

- Floorsafe Australia's RC20 Franklin anodised aluminium-carborundum step inlay 50mm x 5mm is available in three versions. A clear anodised aluminium with a choice of black or yellow inserts. All black anodised aluminium with black inserts.
- This quality manufactured product has been designed & manufactured to be installed into internal & external rebated steps where safety and appearance is of utmost importance. The features of this product is that it looks attractive, is extremely hard-wearing and is a great choice when it comes to providing the utmost safety on

SIZE	LENGTH
5mm x 50mm	3600mm



## CARBONRUNDUM STAIR NOSING

CODE: SNCN01

- Floorsafe Australia's Franklin range of carborundum stair nosing's have been designed & manufactured to be used in extremely high traffic areas.
- Material: The RC7 is manufactured from a quality 5mm thick anodised aluminium. This tough & durable stair nosing with a choice of black or yellow 4 x 10mm carborundum anti-slip strips are ideal to be installed on both internal and external steps & stairways to provide the utmost safety.
- The carborundum inserts provides the highest possible safety rating and is particularly suitable for external wet areas.

SIZE	LENGTH
37mm x 83mm x 5mm Thickness	3600mm

## STAIR TREAD NOSING

CODE: SNTN01

- RKZC-Safety Stair Tread Nosing is specially designed for installation over new and existing steps and stairways. It is applicable where pedestrian safety, stair appearance and stair longevity are the particular concerns. The RKZC-Stair Nosing meets the luminance contrast requirements of the AS/NZ 1428-2009.
- Colour choice: Black, yellow, grey, white, red or brown. Other colours can be made to order.
- On suitable surfaces, the nosing can be fixed using an adhesive or by drilling and screwing.
- A double-sided fibreglass tape is provided to secure the insert over the fixed screws.

SIZE	LENGTH
Outside dimensions 37mm x 75mm Inside dimensions 31mm x 71mm	Available in 3620mm lengths



## FIBRE GLASS STAIR NOSING

CODE : SNFG01

- Fibre glass Stair Nosing Manufactured from premium Vinyl Ester Resin with a 36 grade silicon Carbon slip resistant finish. Chemical & fire resistant available in safety yellow or black.
- Manufactured from premium vinyl ester resin.
- Manufactured with 36# Grade Silicon oxide Grit.
- Flame retardant – Spread of flame Class 1 25 or less.
- Superior corrosive resistant to acids, caustics, petrochemical & waste water.
- Slip resistance Classification P5.

SIZE	LENGTH
30mm x 70mm x 3000mm	3620mm



## INLAY LOGO MATS

CODE : FMILO1

- Can be made using The Original Hydrasorb, Stripe, Waterhorse Premium or many of our other quality matting designs.
- Can be fully edged.
- Perfect for lettering and silhouette images.
- Can be inserted into entrance recesses.
- The result - a premium quality, hard wearing mat with an eye-catching logo that will add prestige to your building or retail space.

THICKNESS	EDGES
10mm	Can be fully edged



## PRINTED LOGO MATS

CODE : FMPLO1

- Functions as an excellent branding tool for your business or club.
- Can be fully edged.
- Can print vibrant photography.
- Simply supply your logo/artwork, or we can reproduce it for you (nominal fee applies).

THICKNESS	EDGES
8mm	25mm



## DIAMOND PLATE GEL

CODE : FMDPO1

- Comes in standard 18mm thickness.
- Rugged, durable, and boasting a 4mm vinyl skin surface.
- An embossed diamond pattern that actively prevents slips.
- Top surface bonded to 12mm buoyant EVA non-slip backing.
- Features bright, built-in yellow borders along both edges that are also beveled to reduce the chance of trips.
- Has a unique, bonded, slip resisting EVA underlay as standard, that minimises mat movement.

THICKNESS	EDGES
18mm	Fully bevelled

## ENTRANCE MATTING

CODE : FMEM01

- Making a decision as to the best entrance mat for your facility or business can be difficult when faced with such a wealth of choices. There are however, a number of critical criteria to help select the most suitable entrance mat for your particular facility.
- It is often valuable to seek advice of skilled, trained matting consultants to ensure that the matting that you have chosen is ideal for your facility.

### PRODUCTS OF ENTRANCE MATTING

SuperNop / Superbrush / Hydrasorb / Printed logo mats / Inlay Logo Mats



# TRADE SERVICES

Arrow Traders has a team of highly trained professionals with a range of skill sets. We can carry out multiple trade services. Our areas include electrical services, handyman services, metal fabrication works, upholstery, painting services and more. We have ensured that between our diverse team, we have a number of various skills available. We have tradesmen highly skilled in painting, electrical works, metal and steel works and many other trades. Therefore, we can ensure that we can respond to our client's specific needs.

Our team possesses all of the appropriate qualifications and certifications to carry out any trades work. Prior to beginning any trades project, we ensure that our team has visited the site. We will assess the situation and conduct any hand scans or EHI scans necessary. As a result, we can determine the best solution and process.

Arrow Traders can supply and install any of our equipment. We are also happy to conduct any repairs or replacements of previous equipment such as janitorial and car park safety products. We aim to deliver a high-quality service at all times. With our team of highly trained professionals, we can provide experienced advice and solutions.



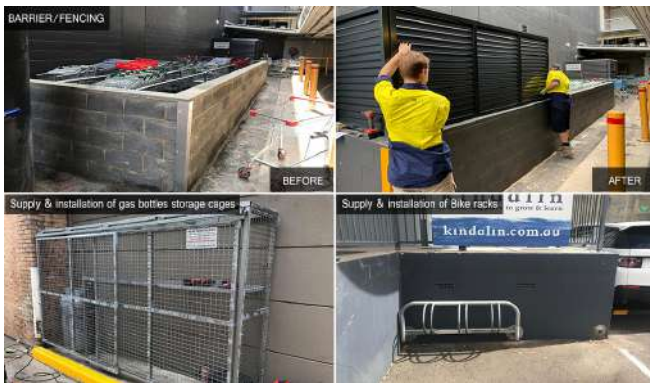


# TRADE SERVICES



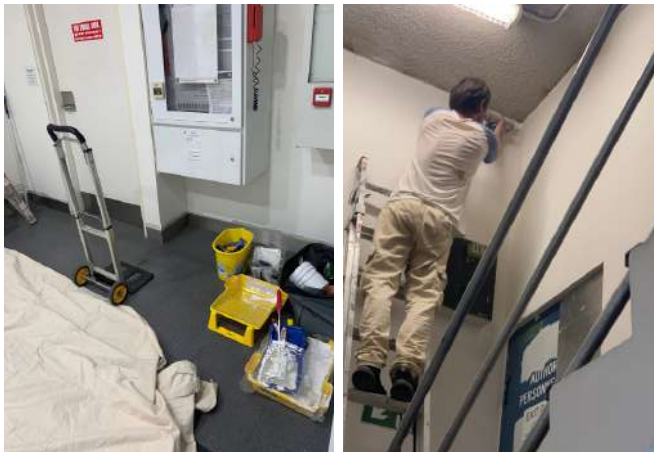
## ELECTRICAL SERVICES

- Re-lamping.
- Supply and Installation of new LED's.
- Other Electrical Work.



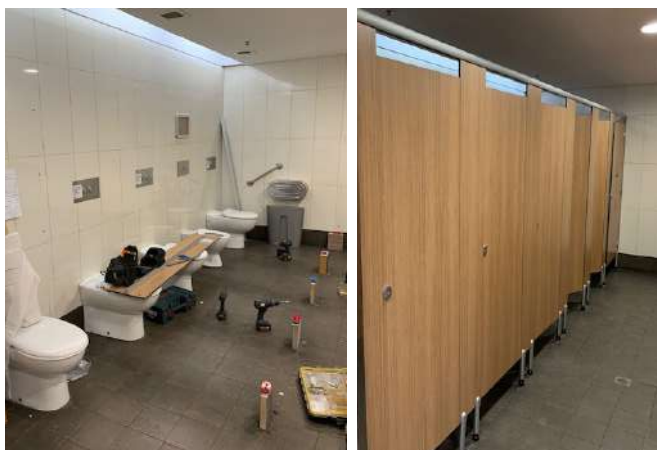
## METAL WORKS

- Arrow Traders is qualified in metal fabrication and steel works.
- We ensure that we have the correct qualifications and permits to complete any of these jobs prior to attending the site. Our team can install and repair fencing, cages, trolley bays, bike racks, checker door plates, Armco railings and security barricades.



## PAINTING

- The team has completed many painting projects for our clients. We can take care of everything from supplying the paints to ensuring the paint job will be long-lasting. The team specialises in back and front of house painting, outdoor painting, painting of doors, materials, and accessories.
- We can complete any paint project from patch and paint to fully painted rooms. Our team can provide you with advice and high quality paint service.



## RESTROOM CABINETS & PARTITIONS

- Arrow Washrooms is the janitorial side of our Arrow Traders team. Through this service and shop, we supply and install all your janitorial needs. Part of this service includes the installation of restroom cabinets and partitions.
- Our team is equipped with the knowledge and skills to help you decide on the appropriate materials and accessories needed for your restrooms.
- We can have your restroom ready for use by correctly securing your cabinets and partitions for your area. We can source and supply cabinets and partitions in various materials and sizes with differing benefits.





## HANDYMAN SERVICES

- Additionally, our tradesmen can carry out any handyman job. Our handymen are capable of jobs including painting, restroom repairs, furniture repairs, metal works and carpark projects. We have handymen who routinely conduct maintenance work for our clients on a weekly basis. As part of these jobs, they can do patch and paint, upkeep restrooms and conduct small repairs such as resealing signs and trolley bays.
- We can have our handymen help maintain your carpark by replacing or resealing bollards, wheel stops, speed humps, line-marking and signage.



## RE-UPHOLSTERY

- We can help you to upholster any damaged furniture. Arrow Traders can take your furniture from worn down to brand new with our service. We have ensured that all our material used is fire retardant certified and complies with the Australian Standards. We have completed upholstery jobs for many of our clients, servicing a range of products.
- Our team has upholstered many items from shopping centre lounges to children's play areas. We have a range of fabrics and colours available. Therefore, you can be guaranteed that we will have the right fit for you.



## LINE MARKING

- If you are looking for an idea on line marking or require a free quote, please contact us. Our staff will happily discuss your needs and advise you on the best way to get your line marking project completed.
- Our linemarking services include:
- Linemarking for carparks, factories, warehouses and playgrounds.
- Line removal.
- New work and remarking.
- Non-Slip & High Reflective Products.



## SIGN INSTALLATIONS

- At Arrow Traders we don't just supply safety signs, we can also install them on your premise. Our team has installed road and safety signage in many environments. We can advise on the best method and equipment to use, based on the surface, material, and purpose. All our safety signs comply with AS 1319.
- Therefore, when you have signs installed by Arrow Traders you can be reassured that these signs will help keep your premise safe. Our team can install our signs in a quick and efficient manner. We understand the importance of safety signs and aim to install them as soon as a hazard is identified.

# TRADE SERVICES



## CARPARK WORKS

- Arrow Traders can install all our carpark safety products for your premises.
- Our team can install bollards, wheel stops, speed humps and boom gates for your premises.



## MIRRORS – IN TOILETS AND LIFTS

- Arrow Traders work with many shopping centres and similar businesses. These clients of ours often require mirror installations for their toilets and lifts. Before beginning the project, our team will come out to your site to assess and measure the job.
- We will provide you with advice based on your situation to ensure we provide the best solution for your requirements.
- Our team can source mirrors for your customised situation. Therefore, ensuring our mirrors are durable and perfect for your toilets or lifts.
- We will assess the sizing, finishes, aesthetics, and functions for your premises.



## LIGHTING

- Our team is experienced with the appropriate skills to complete lighting projects for our clients. Some of our lighting work includes replacing old lights, re-lamping and the supply and installation of new LEDs. We have ensured that our team members working on these projects have the correct certifications and qualifications.
- Arrow Traders has worked with many of our clients, including Westfield Centres and Westmead hospital to replace their existing lighting. We can supply and install the lights, so you do not have to worry about anything.



## DOK GUARDIAN BARRIERS

- Arrow Traders is specialised in installing Dok Guardians. We can supply and install these Dok Guardians for your loading docks to prevent any damage or accidents. These barricades are used to stop vehicles, staff or pedestrians and pallet jacks from falling off loading docks.
- The Dok Guardians we supply are highly visible to increase awareness and are created to withstand pressure from heavy vehicles.
- Our team is skilled to install this correctly and securely, therefore reducing damage on your premises.





## INSTALLATION OF PANEL BARRIERS

- Arrow Traders often helps many of our clients with construction and trades work. Therefore, we ensure these construction projects are carried out safely and do not place pedestrians and customers in danger. To help us achieve this we install panel barriers.
- Panel barriers are an effective way to section off work zones and warn pedestrians of the dangers.
- The Arrow Traders team can supply and install these on site for you quickly. Therefore, ensuring pedestrians are not harmed in the work zone.



## ANTI-GRAFFITI MIRROR

- Arrow Traders helps our clients to ensure their premise is consistently maintained. This includes carrying out repair and preventative works.
- Our team is skilled in installing anti-graffiti film over mirrors to prevent damage.
- Therefore, the mirrors are more durable and will not be subject to aimless damage.



## ASPHALT WORK

- With our team of experts, we are experienced in working with asphalt.
- Our team can complete several tasks with asphalt including the installation of bollards and other equipment, repairing damaged surfaces and filling potholes.
- We have the tools and appropriate qualifications to complete asphalt projects safely and efficiently.



# JANITORIAL PRODUCTS

You can make your premises safe and hygienic with these must have products.





# JANITORIAL PRODUCTS



## BABY CHANGING STATION HORIZONTAL/VERTICAL CODE : BCSP01

- Created from high-density polypropylene to reduce moisture absorption, the baby station meets all global ASTM, ADA, EN safety standards.
- Meets all global ASTM, ADA, EN safety standards.
- Easy-reach hooks.
- Antimicrobial protection.

LENGTH	WIDTH	HEIGHT	WEIGHT
84.46 cm	54.61 cm	10.16 cm	10.80 kg



## ML\_8100V METLAM VERTICAL BABY CHANGEING STATION CODE: BCMV01

- Concave change area.
- Safety restraining strap fitted with a click-lock mechanism.
- Dual bed liner dispensers.
- Baby/shoulder bag retainers.
- Gas spring design allows one-handed opening and closing operation.
- Usage instruction and safety label inside unit.
- Suitable for infant use up to 11kg.

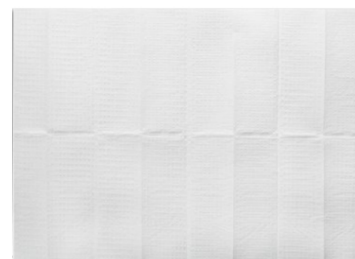
MATERIAL	SIZE
Hi-density bacteria resistant Polyethylene body, Stainless Steel hinge	Open: 885mmH x 480mmW x 885mmD Closed: 870mmH x 480mmW x 126mmD



## ML\_8100H METLAM HORIZONTAL BABY CHANGEING STATION CODE: BCMH01

- Concave change area
- Safety restraining strap fitted with click lock mechanism.
- Dual bed liner dispensers.
- Baby/shoulder bag retainers.
- Gas spring design allows one-handed opening and closing operation.
- Usage instruction and safety label inside unit.
- Suitable for up to 20kg use.

MATERIAL	SIZE
Hi-density bacteria resistant Polyethylene body, Stainless Steel hinge	Open: 855mmW x 560mmH x 495mmD Closed: 855mmW x 560mmH x 107mmD



## RUBBERMAID DISPOSABLE CHANGING TABLE LINERS CODE: BCTL01

- The Rubbermaid Commercial Baby Changing Table Pad fits many sizes of baby changing stations and features 2-ply construction for durability and antimicrobial protection.
- Fits many baby stations to allow for easy cleaning.
- Laminated 2-ply construction for maximum absorption and antimicrobial protection.
- Absorbs liquid to increase the life of the baby changing table
- Box comes with 320 baby changing pads.

LENGTH	WIDTH	HEIGHT	WEIGHT
35.56 cm	31.75 cm	15.24 cm	2.00 kg

## 102 COAT HOOK

CODE: CH102

- Satin Chrome Plated.
- 102\_HOOK\_SCP.
- Screw Fix.

MATERIAL	SIZE
Diecast Zinc, Alloy ZP3 Rubber Bumper	42x42x90mm





## 202C\_HOOK\_ANMB ANTIMICROBIAL 202C CONCEALED FIX COAT HOOK CODE: CH202

- 202C\_HOOK\_ANMB.
- Concealed Screw Fix.
- Note: This unit is accessible compliant when installed in accordance with AS1428.1. guidelines.

MATERIAL	DIMENSIONS
Diecast Zinc, Alloy ZP3 Antimicrobial Coated Rubber Bumper ABS Snap On Cover	73x18x93mm



## 200-SERIES LOCK & INDICATOR SET CODE :LI200

- Components : Indicator, Turnbolt, Staple.
- 200\_LOCK\_SCP.
- Mounting : Screw Fix.
- Optional: 117\_STAPLE\_SCP.

MATERIAL	FINISH
Diecast Zinc, Alloy ZP3	Satin Chrome



## 100A-SERIES T HANDLE LOCK & INDICATOR SET CODE: LI100A

- Components : Indicator, Turnbolt, Staple.
- 100A\_LOCK\_SCP.
- Mounting : Screw Fix.
- Optional: 117\_STAPLE\_SCP.

MATERIAL	FINISH
Diecast Zinc, Alloy ZP3	Satin Chrome



## 300\_LOCK\_ANMB 300 SERIES ANTIMICROBIAL CONCEALED FIX LOCK & INDICATOR SET CODE: LIA300

- Components : Indicator, Turnbolt, Staple.
- 300\_LOCK\_ANMB.
- Mounting: Concealed Screw Fix Surface Mounted.

MATERIAL	FINISH
Indicator- Brass Turnbolt- Diecast Zinc, Alloy ZP3 Lift Off Staple- Diecast Zinc, Alloy ZP3 with ABS Snap On Cover	Antimicrobial Coating (ANMB)

## 300-SERIES CONCEALED FIX SURFACE MOUNTED LOCK & INDICATOR SET CODE : LIC300

- Components : Indicator, Turnbolt, Staple.
- Mounting: Concealed Screw Fix Surface Mounted.

MATERIAL	FINISH/ SPECIFY
Indicator- Brass Turnbolt- Diecast Zinc, Alloy ZP3 Lift Off Staple- Diecast Zinc, Alloy ZP3 with ABS Snap On Cover	Satin Chrome (SCP) 300_LOCK_SCP Bright Chrome (BCP) 300_LOCK_BCP Satin Nickel (SNP) 300_LOCK_SNP Satin Pearl (SPP) 300_LOCK_SPP Antimicrobial Coating (ANMB) 300_LOCK_ANMB

# JANITORIAL PRODUCTS (SOAP/ROLL DISPENSERS)



## ANMB\_XCELSLIDELOCK ANTIMICROBIAL XCEL SLIDE LOCK AND INDICATOR SET CODE : LIXSO1

- Unique Easy-Glide Slide Lock for restricted hand mobility, limb loss and hygiene protection.
- Raised directional arrows for the visually impaired.
- Universal system provides design uniformity.
- Consistent installation saves time.
- Deemed to satisfy Disability Standard AS1428.1 for ambulant cubicle specification only.

MATERIAL	FINISH
Diecast Zinc, Alloy ZP3 ABS Snap On Cover Antimicrobial Coated	ANMB_XCELSLIDELOCK



## AUTOMATIC WHITE LIQUID SOAP DISPENSER CODE : SDAW01

- Our white dispenser has an automatic sensor. Therefore it is the perfect hygienic option. It can be used with gel soap and gel hand sanitiser. Our dispenser can carry up to 800ml of liquid. It also has a window to display how much liquid is left in the dispenser.
- Perfect for: Soap & Gel Sanitiser.
- Automatic Sensor.
- Needs batteries: AA size.
- Mounting Holes included.
- Operational LED Indicator Behind Window.



## PVB STAINLESS STEEL HORIZONTAL SOAP DISPENSER WITH BLACK BUTTON CODE: SDHB01

- Stainless Steel Manual Soap Dispenser.
- Satin finish.
- With New Plastic Valve.
- With lock & key.
- Vol. 1,200ml.
- Material:#304 Satinless Steel.
- Packing : 20pcs/Carton, 2.6 Cubic feet.

## STAINLESS STEEL HORIZONTAL SOAP DISPENSER CODE : SDHS01

- Satin Finish.
- Polished Finish.
- Stainless Steel Manual Soap Dispenser.
- With lock & key.
- Vol. 1,200ml.
- Material:#304 stainless steel.
- Packing: 20pcs/Carton, 3.92 Cubic feet.



## AUTOMATIC LIQUID SOAP & HAND SANITISER DISPENSER WITH STAND CODE: SDAS01

- Our Automatic Dispenser can be used to dispense hand sanitiser or liquid soap. The hands-free device limits the spread of germs. Therefore, it is a hygienic option for your premises. The clear window displays the level of soap or sanitiser in the dispenser.
- Stand can be used alone as an A4 sign stand.



**STAINLESS STEEL VERTICAL SOAP DISPENSER**

**CODE: SDVS01**

- Stain Finish
- Polished Finish
- Stainless Steel Manual Soap Dispenser
- With lock & key
- Vol. 1,200ml
- Material: #304 stainless steel
- Packing: 20pcs/Carton, 3.92 Cubic Feet



**STAINLESS STEEL SOAP DISPENSER WITH BLACK BUTTON**  
**CODE: SDVB01**

- PVB Stain Finish With New Plastic Valve
- Stainless Steel Manual Soap Dispenser
- Satin finish
- With new plastic valve
- With lock & key
- Vol. 1, 200ml
- Material: #304 Stainless Steel
- Packing: 20pcs/Carton, 2.6 Cubic feet



**STAINLESS STEEL JUMBO ROLL TISSUE DISPENSER**

**CODE: TDSJ01**

- Inner core dia.40mm
- Inner core dia.60mm
- Inner core dia.72mm
- Stainless Steel Jumbo Roll Tissue Dispenser
- Material: #430 Satin stainless steel
- With lock & key
- Vol. 350m long up to 4-1/4" 2-ply tissue
- Packing: 6pcs/Carton, 4.0 Cubic feet



**STAINLESS STEEL JUMBO DOUBLE ROLL TISSUE DISPENSER**  
**CODE: TDSJD01**

- Satin finish
- Polished finish
- Stainless Steel Jumbo Roll Tissue Dispenser
- DUAL ROLL TISSUE DISPENSER (9")
- Material: #430 satin stainless steel
- Packing: 4pcs/Carton, 3.31 Cubic feet



**HALYARD MEDICAL 7056 VERSA TOWEL DISPENSER** **CODE: MTD01**

- Versa Towel dispensers are designed to be wall-mounted for easy and economical measured dispensing of the perforated roll format Versa Towel.
- They are made from durable, white PS plastic and is available in Large (49cm)
- Refilled by pulling/extending blue handles on both ends and replacing versa towel roll from underneath.
- White Plastic
- Overall Dimensions – 530mm W x 148mm H x 153mm D
- Overall Finish – ABS Plastic

# WET WEATHER GEAR

Arrow Traders has recently started stocking umbrella baggers and umbrella bags. These products are perfect for keeping your premises clean and dry, regardless of the weather. To prevent wet flooring and potential hazards, we recommend installing the baggers right at your entrance for convenience, to prevent wet flooring and potential hazards. Therefore, customers can immediately bag their umbrellas after walking in from the rain. Customers can simply place their umbrella into the bag and pull out the bagged umbrella.

They are perfect for building entrances to reduce water drips and wet floors. As a result, hazards are reduced, and customers are protected from potential accidents.

The baggers are compatible with long and short bags. Therefore, these baggers are compatible with all umbrellas and convenient for all customers. They come in stainless steel, stainless matte and powder-coated black finish.

We stock both long and short bags that are compatible with the baggers. Our long bags are 72cm x 14cm and our short bags are 40cm x 14cm. These bags are biodegradable.





#### UMBRELLA BAGGER

CODE: UB01

- This product has been made to reduce the mess and water drops in your building. The bagger is made specifically for bagging umbrellas. Have our baggers installed at the entrance of your building so that people can bag their umbrellas quickly and easily. As a result, your surfaces stay dry and clean.
- Bagger designed to allow users to bag their umbrellas quickly. As a result, your floors stay dry and clean.
- Simple to use.
- Compatible with long and short bags.
- Finishing options: stainless steel, stainless matte, powder coat black.
- Bags sold separately.



#### UMBRELLA BAGS

CODE: UB02

- These umbrella bags come in two sizing options. Our large bags are 72cm x 14cm and our short bags are 40cm x 14cm.
- Long Bags: 72cm x 14cm.
- Short Bags: 40cm x 14cm.
- Bio-Degradable.
- Refills Available.
- 1000 pcs. per carton.



#### WET WEATHER BLACK BUCKET

CODE: WBB01

- Type: Wet weather buckets.
- Color: Black.
- Dimension: 300MM.
- Comes with signage.



#### WET WEATHER GREY BUCKET

CODE: WBG01

- Grey or Yellow buckets.
- Diameter: 39.7 cm.
- Height: 43.5 cm.
- Volume Capacity [Nom]: 37.9 L.
- Product Weight: 1.4 kg.

# VISIT US







## Customer service Guide

**Payment terms:** Your good credit allows us to bill you and eliminate the need for payment in advance! Net 30 days are extended to all approved new customers. All payments must be made in Australian dollars.

**Custom Orders:** We can customise many of our products for your specific needs. Call our customer service team for a quote on 02 9625 8859 or 02 8678 8879.

**Shipping & Handling Charges:** Stock item orders before 2PM ship same day. For all orders within Australia, shipping & handling is based on order value.

**Installation:** Arrow Work & Safety Gear have dedicated teams to install all safety gear in this catalogue, call us for pricing.

## Inducted & Registered with:





**PHONE : 02 96258859**  
Email: [sales@arrowtraders.com.au](mailto:sales@arrowtraders.com.au)  
[www.arrowtraders.com.au](http://www.arrowtraders.com.au)  
[www.arrowsafety.com.au](http://www.arrowsafety.com.au)  
[www.arrowwashrooms.com.au](http://www.arrowwashrooms.com.au)

**THE SAFETY WIZARDS**



**Arrow Traders Pty Ltd**  
Shop 29, 40 Sterling Road, Minchinbury,  
NSW 2770, Australia  
Phone: 02 96258859

**Arrow Work & Safety Gear**  
Unit 4A, 109 Station Road (Corner of  
Station Road and Park Road), Seven Hills,  
NSW 2147, Australia  
Phone: 02 86788879

**Arrow Electrical Wholesalers**  
Unit 3A, 109 Station Road (Corner of  
Station Road and Park Road), Seven Hills,  
NSW 2147, Australia  
Phone: 02 86788879



**WORKWEAR**



**FOOTWEAR**



**PPE**



**WORKPLACE  
SAFETY**



**SAFETY  
SIGNAGE**



**ROAD SAFETY**